

## Anti-Tryptophan Hydroxylase/TPH Rabbit pAb

WL05298

For Research Use Only. Not For Use In Diagnostic Procedures

## Product Information

<b>Product name</b>	Anti-Tryptophan Hydroxylase/TPH Rabbit pAb	
<b>Source</b>	Rabbit	
<b>Species reactivity</b>	Human, Mouse, Rat	
<b>Tested applications</b>	Western blot	1:1000-1:2000
	<i>*Suggested working dilutions are given as a guide only. It is recommended that the user titrates the product for use in their own experiment using appropriate negative and positive controls.</i>	
<b>Molecular Wt.</b>	51 kDa	
<b>Pack size</b>	50/100/200/500/1000 $\mu$ l	
<b>Storage</b>	Store at -20°C. <b>Avoid freeze/thaw cycles.</b>	
<b>Storage buffer</b>	Supplied in 20 mM phosphate (pH 7.5), 150 mM NaCl, 100 $\mu$ g/ml BSA, 50% glycerol and less than 0.02% sodium azide	

## General Information

**Background** The encoded protein catalyzes the first and rate limiting step in the biosynthesis of serotonin, an important hormone and neurotransmitter. Mutations in this gene have been associated with an elevated risk for a variety of diseases and disorders, including schizophrenia, somatic anxiety, anger-related traits, others.

**Immunogen** Polyclonal antibody is produced by immunizing animals with a synthetic peptide of Tryptophan Hydroxylase/TPH.

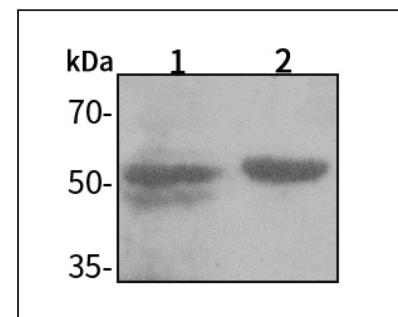
**Purification** Polyclonal antibody was purified by Protein A affinity chromatography.

## Anti-Tryptophan Hydroxylase/TPH Rabbit pAb

WL05298

For Research Use Only. Not For Use In Diagnostic Procedures

## Product Images



## Western blot-Anti-Tryptophan Hydroxylase/TPH pAb

Lane 1: Human HUVEC cell lysate 20 $\mu$ gLane 2: Human SW480 cell lysate 20 $\mu$ g

Separation gel: 10% polyacrylamide

Electrophoresis: 100V, 4°C, 3h

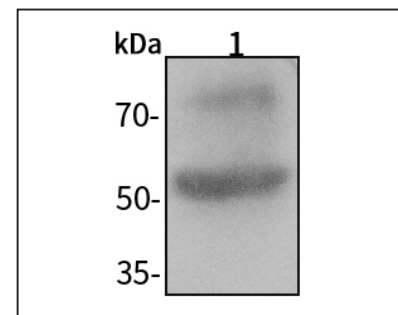
Transmembrane: 100V, 4°C, 1h

Blocking: 5% w/v nonfat dry milk, 1 $\times$  TBST, at RT with gentle shaking

Primary antibody: 1:1000 in blocking buffer, 4°C, overnight

Secondary antibody (WLA023a) : 1:5000-1:10000, 45min

Detection: ECL, 30s-2min



## Western blot-Anti-Tryptophan Hydroxylase/TPH pAb

Lane 1: Rat stomach tissue lysate 10 $\mu$ g

Separation gel: 10% polyacrylamide

Electrophoresis: 100V, 4°C, 3h

Transmembrane: 100V, 4°C, 1h

Blocking: 5% w/v nonfat dry milk, 1 $\times$  TBST, at RT with gentle shaking

Primary antibody: 1:1000 in blocking buffer, 4°C, overnight

Secondary antibody (WLA023a) : 1:5000-1:10000, 45min

Detection: ECL, 30s-2min