



Anti-Fascin Rabbit pAb

WL05273

For Research Use Only. Not For Use In Diagnostic Procedures

Product Information

| | | |
|----------------------------|--|---------------|
| Product name | Anti-Fascin Rabbit pAb | |
| Source | Rabbit | |
| Species reactivity | Human, Mouse, Rat | |
| Tested applications | WB | 1:1000-1:2000 |
| Pack size | 50/100/200/500/1000 μ l | |
| Storage | Store at -20°C. Avoid freeze/thaw cycles. | |
| Storage buffer | Supplied in 20 mM phosphate (pH 7.5), 150 mM NaCl, 100 μ g/ml BSA, 50% glycerol and less than 0.02% sodium azide | |

General Information

Background Fascin is a highly conserved and ubiquitous actin cross-linking protein that has a major function in cell motility and adhesion. Fascin localizes to a number of highly dynamic cellular structures that require strong mechanical support which include stress fibers and cellular protrusions such as microvilli, microspikes and lamellipodia. Fascin is up-regulated in many human carcinomas.

Immunogen Polyclonal antibody is produced by immunizing animals with a synthetic peptide of Fascin.

Purification Polyclonal antibody was purified by Protein A affinity chromatography.

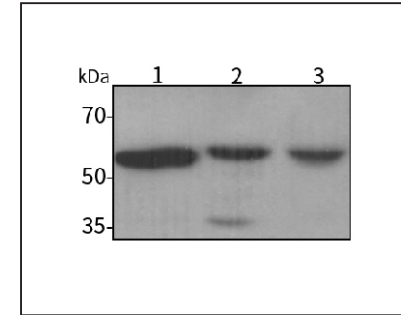


Anti-Fascin Rabbit pAb

WL05273

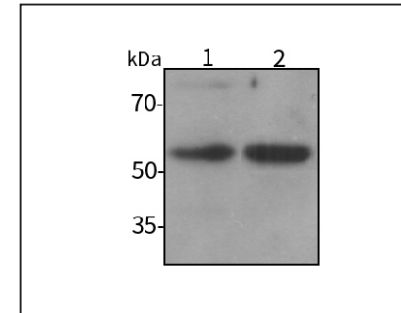
For Research Use Only. Not For Use In Diagnostic Procedures

Product Images



Western blot-Anti-Fascin pAb

Lane 1: Human HUVEC cell lysate
 Lane 2: Human HeLa cell lysate
 Lane 3: Human MCF-7 cell lysate
 All lanes: Anti-Fascin at 1:1000 dilution
 Lysates/proteins at 20-50 μ g per lane.
 Predicted band size: 54 kDa
 Observed band size: 54 kDa



Western blot-Anti-Fascin pAb

Lane 1: Rat stomach tissue lysate
 Lane 2: Mouse liver tissue lysate
 All lanes: Anti-Fascin at 1:1000 dilution
 Lysates/proteins at 20-50 μ g per lane.
 Predicted band size: 54 kDa
 Observed band size: 54 kDa