

Anti-TRAF3 Rabbit pAb



WL04574

For Research Use Only. Not For Use In Diagnostic Procedures

Product Information

Product name	Anti-TRAF3 Rabbit pAb	
Source	Rabbit	
Species reactivity	Human, Mouse, Rat	
Tested applications	Western blot	1:500-1:1000
	<i>*Suggested working dilutions are given as a guide only. It is recommended that the user titrates the product for use in their own experiment using appropriate negative and positive controls.</i>	
Molecular Wt.	64 kDa	
Pack size	50/100/200/500/1000µl	
Storage	Store at -20°C. Avoid freeze/thaw cycles.	
Storage buffer	Supplied in 20 mM phosphate (pH 7.5), 150 mM NaCl, 100 µg/ml BSA, 50% glycerol and less than 0.02% sodium azide	

General Information

Background TRAF3 is a member of the TNF receptor associated factor (TRAF) protein family. TRAF proteins associate with, and mediate the signal transduction from, members of the TNF receptor (TNFR) superfamily. TRAF3 regulates pathways leading to the activation of NF- κ -B and MAP kinases, and plays a central role in the regulation of innate immune response.

Immunogen Polyclonal antibody is produced by immunizing animals with a synthetic peptide of TRAF3.

Purification Polyclonal antibody was purified immunogen affinity chromatography.

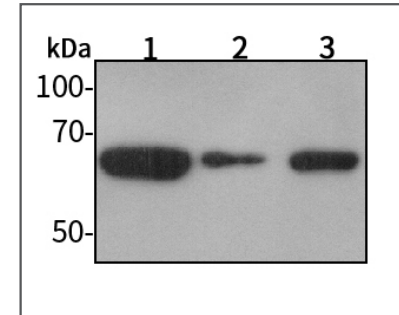
Anti-TRAF3 Rabbit pAb



WL04574

For Research Use Only. Not For Use In Diagnostic Procedures

Product Images



Western blot-Anti-TRAF3 pAb

Lane 1: Human HeLa cell lysate 30µg

Lane 2: Human MCF-7 cell lysate 30µg

Lane 3: Human HEK-293 cell lysate 30µg

Separation gel: 8% polyacrylamide

Electrophoresis: 100V, 4°C, 3h

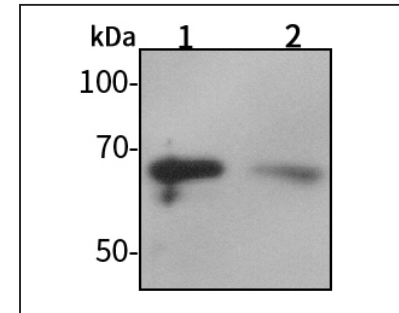
Transmembrane: 100V, 4°C, 1.5-2h

Blocking: 5% w/v nonfat dry milk, 1×TBST, at RT with gentle shaking

Primary antibody: 1:1000 in blocking buffer, 4°C, overnight

Secondary antibody-HRP: 1:5000-1:10000 in blocking buffer, RT, 45min

Detection: ECL, 30s-2min



Western blot-Anti-TRAF3 pAb

Lane 1: Rat lung tissue lysate 30µg

Lane 2: Rat colon tissue lysate 30µg

Separation gel: 8% polyacrylamide

Electrophoresis: 100V, 4°C, 3h

Transmembrane: 100V, 4°C, 1.5-2h

Blocking: 5% w/v nonfat dry milk, 1×TBST, at RT with gentle shaking

Primary antibody: 1:1000 in blocking buffer, 4°C, overnight

Secondary antibody-HRP: 1:5000-1:10000 in blocking buffer, RT, 45min

Detection: ECL, 30s-2min