

Anti-S100 α Rabbit pAb

WL04268

For Research Use Only. Not For Use In Diagnostic Procedures

Product Information

Product name	Anti-S100 α Rabbit pAb	
Source	Rabbit	
Species reactivity	Human, Mouse, Rat	
Tested applications	Western blot	1:500-1:1000

**Suggested working dilutions are given as a guide only. It is recommended that the user titrates the product for use in their own experiment using appropriate negative and positive controls.*

Molecular Wt.	Predicted band size: 11 kDa	
	Observed band size: 15 kDa	

Pack size 50/100/200/500/1000 μ l

Storage Store at -20°C. **Avoid freeze/thaw cycles.**

Storage buffer Supplied in 20 mM phosphate (pH 7.5), 150 mM NaCl, 100 μ g/ml BSA, 50% glycerol and less than 0.02% sodium azide

General Information

Background The protein encoded by this gene is a member of the S100 family of proteins containing 2 EF-hand calcium-binding motifs. S100 proteins are localized in the cytoplasm and/or nucleus of a wide range of cells, and involved in the regulation of a number of cellular processes such as cell cycle progression and differentiation. The S-100 protein is involved in the regulation of cellular processes such as cell cycle progression and differentiation. Research also indicates that the S-100 protein may function in the activation of Ca²⁺ induced Ca²⁺ release, inhibition of microtubule assembly and inhibition of protein kinase C mediated phosphorylation.

Immunogen Polyclonal antibody is produced by immunizing animals with a synthetic peptide of S100 α .

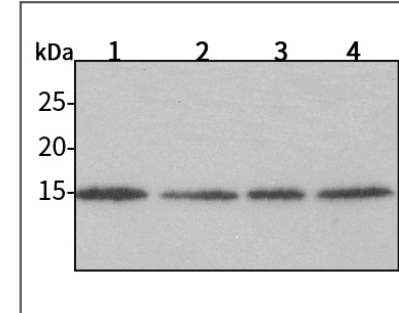
Purification Polyclonal antibody was purified by immunogen affinity chromatography.

Anti-S100 α Rabbit pAb

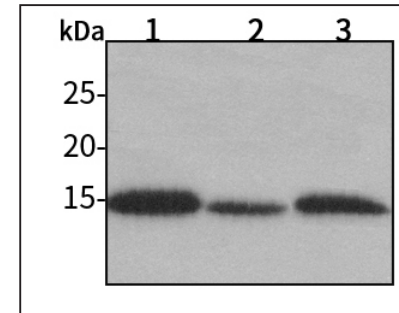
WL04268

For Research Use Only. Not For Use In Diagnostic Procedures

Product Images

Western blot-Anti-S100 α pAb

Lane 1: Human HeLa cell lysate 30 μ g
 Lane 2: Human MCF-7 cell lysate 30 μ g
 Lane 3: Human HEK293 cell lysate 30 μ g
 Lane 4: Human A549 cell lysate 30 μ g
 Separation gel: 15% polyacrylamide
 Electrophoresis: 100V, 4°C, 3h
 Transmembrane: 100V, 4°C, 1.5-2h
 Blocking: 5% w/v nonfat dry milk, 1 \times TBST, at RT with gentle shaking
 Primary antibody: 1:1000 in blocking buffer, 4°C, overnight
 Secondary antibody-HRP: 1:5000-1:10000 in blocking buffer, RT, 45min
 Detection: ECL, 30s-2min

Western blot-Anti-S100 α pAb

Lane 1: Mouse liver tissue lysate 30 μ g
 Lane 2: Rat lung tissue lysate 30 μ g
 Lane 3: Rat colon tissue lysate 30 μ g
 Separation gel: 15% polyacrylamide
 Electrophoresis: 100V, 4°C, 3h
 Transmembrane: 100V, 4°C, 1.5-2h
 Blocking: 5% w/v nonfat dry milk, 1 \times TBST, at RT with gentle shaking
 Primary antibody: 1:1000 in blocking buffer, 4°C, overnight
 Secondary antibody-HRP: 1:5000-1:10000 in blocking buffer, RT, 45min
 Detection: ECL, 30s-2min