

Anti-CD10 Rabbit pAb



WL02828

For Research Use Only. Not For Use In Diagnostic Procedures

Product Information

Product name	Anti-CD10 Rabbit pAb	
Source	Rabbit	
Species reactivity	Human, Mouse, Rat	
Tested applications	WB	1:1000-1:2000
Pack size	50/100/200/500/1000 μ l	
Storage	Store at -20°C. Avoid freeze/thaw cycles.	
Storage buffer	Supplied in 20 mM phosphate (pH 7.5), 150 mM NaCl, 100 μ g/ml BSA, 50% glycerol and less than 0.02% sodium azide	

General Information

Background

Cd10, also called the common acute lymphoblastic leukemia antigen (CALLA) and neutral endopeptidase (NEP), is a zinc-dependent metalloprotease enzyme that degrades a number of small secreted peptides, most notably the amyloid beta peptide whose abnormal misfolding and aggregation in neural tissue has been implicated as a cause of Alzheimer's disease. CD10 is expressed on early B and T lymphoid precursors, B blasts, some granulocytes, bone marrow stromal cells, and certain epithelial cells including some tumor cell lines. CD10 is used as a marker of common acute lymphocytic leukemias and some lymphomas.

Immunogen

Polyclonal antibody is produced by immunizing animals with a synthetic peptide of CD10.

Purification

Polyclonal antibody was purified by Protein A affinity chromatography.

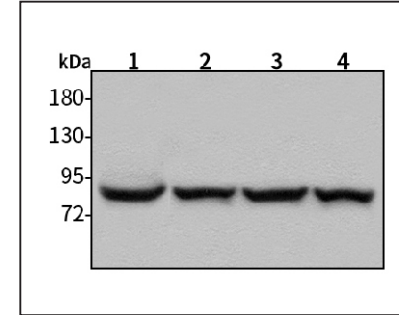
Anti-CD10 Rabbit pAb



WL02828

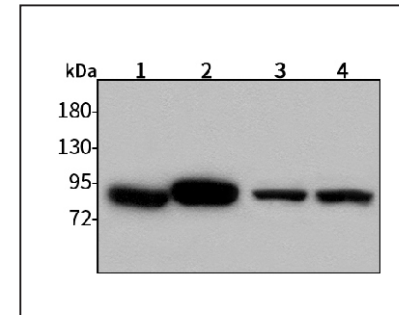
For Research Use Only. Not For Use In Diagnostic Procedures

Product Images



Western blot-AntiCD10 pAb

Lane 1: Human Hep-G2 cell lysate
 Lane 2: Human HeLa cell lysate
 Lane 3: Human BGC-823 cell lysate
 Lane 4: Human MGC-803 cell lysate
 All lanes: Anti-CD10 at 1:1000 dilution
 Lysates/proteins at 20-50 μ g per lane.
 Predicted band size: 85 kDa
 Observed band size: 85 kDa



Western blot-AntiCD10 pAb

Lane 1: Mouse kidney tissue lysate
 Lane 2: Mouse heart tissue lysate
 Lane 3: Rat lung tissue lysate
 Lane 4: Rat stomach tissue lysate
 All lanes: Anti-CD10 at 1:1000 dilution
 Lysates/proteins at 20-50 μ g per lane.
 Predicted band size: 85 kDa
 Observed band size: 85 kDa