

## Anti-PRSS8 Rabbit pAb



WL05211

For Research Use Only. Not For Use In Diagnostic Procedures

## Product Information

<b>Product name</b>	Anti-PRSS8 Rabbit pAb	
<b>Source</b>	Rabbit	
<b>Species reactivity</b>	Human	
<b>Tested applications</b>	Western blot	1:1000-1:2000
	<i>*Suggested working dilutions are given as a guide only. It is recommended that the user titrates the product for use in their own experiment using appropriate negative and positive controls.</i>	
<b>Molecular Wt.</b>	Predicted band size: 36 kDa Observed band size: 30 kDa	
<b>Pack size</b>	50/100/200/500/1000µl	
<b>Storage</b>	Store at -20°C. <b>Avoid freeze/thaw cycles.</b>	
<b>Storage buffer</b>	Supplied in 20 mM phosphate (pH 7.5), 150 mM NaCl, 100 µg/ml BSA, 50% glycerol and less than 0.02% sodium azide	

## General Information

**Background** PRSS8 is a member of the peptidase S1 or chymotrypsin family of serine proteases. It is a heterodimer of two chains, light and heavy, which are held by a disulfide bond. This protease exhibits trypsin-like substrate specificity, cleaving protein substrates at the carboxyl terminus of lysine or arginine residues.

**Immunogen** Polyclonal antibody is produced by immunizing animals with a synthetic peptide of PRSS8.

**Purification** Polyclonal antibody was purified by Protein A affinity chromatography.

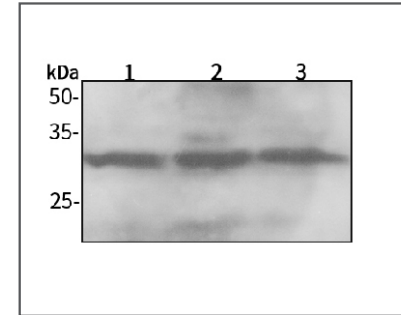
## Anti-PRSS8 Rabbit pAb



WL05211

For Research Use Only. Not For Use In Diagnostic Procedures

## Product Images



## Western blot-Anti-PRSS8 pAb

Lane 1: Human HeLa cell lysate 20µg

Lane 2: Human MCF-7 cell lysate 20µg

Separation gel: 11% polyacrylamide

Electrophoresis: 100V, 4°C, 3h

Transmembrane: 100V, 4°C, 1h

Blocking: 5% w/v nonfat dry milk, 1×TBST, at RT with gentle shaking

Primary antibody: 1:1000 in blocking buffer, 4°C, overnight

Secondary antibody (WLA023a) : 1:5000-1:10000, 45min

Detection: ECL, 30s-2min