

Anti-Notch1 Rabbit pAb



WL03097

For Research Use Only. Not For Use In Diagnostic Procedures

Product Information

Product name	Anti-Notch1 Rabbit pAb		
Source	Rabbit		
Species reactivity	Human, Mouse, Rat		
Tested applications	WB	1:1000-1:2000	
	IHC	1:100-1:400	
Cellular localization	Secreted and Cell membrane		
Pack size	50/100/200/500/1000µl		
Storage	Store at -20°C. Avoid freeze/thaw cycles.		
Storage buffer	Supplied in 20 mM phosphate (pH 7.5), 150 mM NaCl, 100 µg/ml BSA, 50% glycerol and less than 0.02% sodium azide		

General Information

Background	Notch proteins (Notch1-4) are a family of transmembrane receptors that play important roles in development and the determination of cell fate. The notch genes are expressed in a variety of tissues in both the embryonic and adult organism, suggesting that the genes are involved in multiple signaling pathways. The notch proteins have been found to be overexpressed or rearranged in human tumors. Ligands for notch include Jagged1, Jagged2 and Delta. Jagged can activate notch and prevent myoblast differentiation by inhibiting the expression of muscle regulatory and structural genes. Delta expression has also been found in neuroendocrine tumors such as neuroblastomas and pheochromocytomas.
Immunogen	Polyclonal antibody is produced by immunizing animals with a synthetic peptide of Notch1.
Purification	Polyclonal antibody was purified by Protein A affinity chromatography.

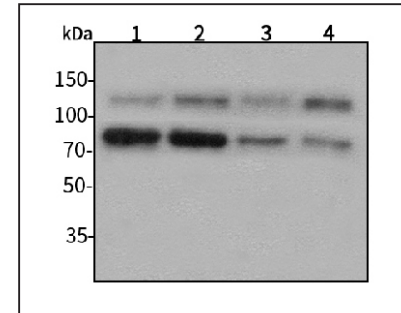
Anti-Notch1 Rabbit pAb



WL03097

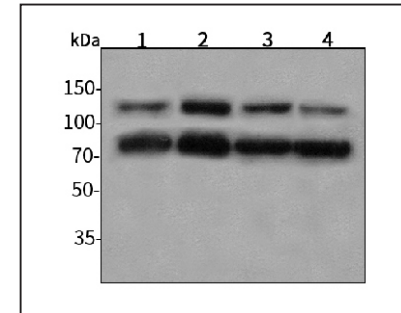
For Research Use Only. Not For Use In Diagnostic Procedures

Product Images



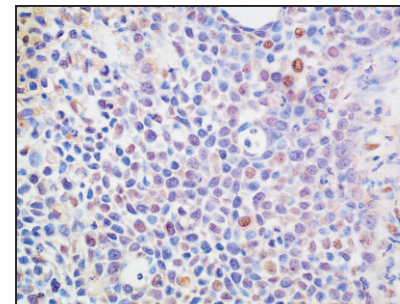
Western blot-Anti-Notch1 pAb

Lane 1: Human HepG2 cell lysate
 Lane 2: Human Hela cell lysate
 Lane 3: Human BGC-823 cell lysate
 Lane 4: Human MCF-7 cell lysate
 All lanes: Anti-Notch1 at 1:1000 dilution
 Lysates/proteins at 20-50 µg per lane.
 Predicted band size: 88,120 kDa
 Observed band size: 88,120 kDa



Western blot-Anti-Notch1 pAb

Lane 1: Mouse liver tissue lysate
 Lane 2: Mouse brain tissue lysate
 Lane 3: Rat spleen tissue lysate
 Lane 4: Rat stomach tissue lysate
 All lanes: Anti-Notch1 at 1:1000 dilution
 Lysates/proteins at 20-50 µg per lane.
 Predicted band size: 88,120 kDa
 Observed band size: 88,120 kDa



Immunohistochemistry-Anti-Notch1 pAb

Immunohistochemical analysis of paraffin-embedded human 823 cancer using anti-Notch1 Rabbit Antibody at 1:100 dilution.
 Perform heat mediated antigen retrieval with Tris-EDTA buffer pH 9.0

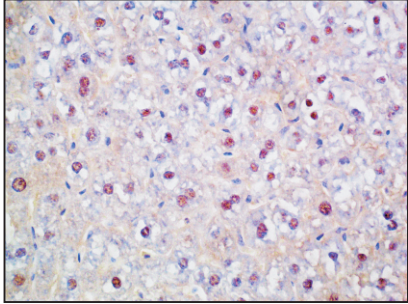
Anti-Notch1 Rabbit pAb



WL03097

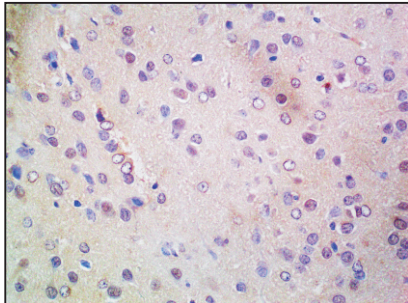
For Research Use Only. Not For Use In Diagnostic Procedures

Product Information



Immunohistochemistry-Anti-Notch1 pAb

Immunohistochemical analysis of paraffin-embedded mouse liver using anti-Notch1 Rabbit Antibody at 1:100 dilution.
Perform heat mediated antigen retrieval with Tris-EDTA buffer pH 9.0



Immunohistochemistry-Anti-Notch1 pAb

Immunohistochemical analysis of paraffin-embedded Rat brain using anti-Notch1 Rabbit Antibody at 1:100 dilution.
Perform heat mediated antigen retrieval with Tris-EDTA buffer pH 9.0