

Anti-SHC1 Rabbit pAb



WL04207

For Research Use Only. Not For Use In Diagnostic Procedures

Product Information

Product name	Anti-SHC1 Rabbit pAb	
Source	Rabbit	
Species reactivity	Human, Mouse, Rat	
Tested applications	Western blot	1:500-1:1000
	Immunohistochemistry	1:200-1:400
	<i>*Suggested working dilutions are given as a guide only. It is recommended that the user titrates the product for use in their own experiment using appropriate negative and positive controls.</i>	
Molecular Wt.	63 kDa	
Pack size	50/100/200/500/1000µl	
Storage	Store at -20°C. Avoid freeze/thaw cycles.	
Storage buffer	Supplied in 20 mM phosphate (pH 7.5), 150 mM NaCl, 100 µg/ml BSA, 50% glycerol and less than 0.02% sodium azide	

General Information

Background	This gene encodes three main isoforms that differ in activities and subcellular location. Growth factor triggering of protein tyrosine kinase receptors induces signals that cascade to the nucleus activating mitogenic, as well as other, responses. Critical components of this process include adapter proteins such as Shc and IRS-1 that lack detectable catalytic activity. These are immediate substrates of receptor tyrosine kinase activity and serve to physically link activated receptors to downstream signaling components. Whereas Shc has been implicated in signaling by diverse receptor families, IRS-1 serves primarily as the major Insulin receptor substrate.
Immunogen	Polyclonal antibody is produced by immunizing animals with a synthetic peptide of SHC1.
Purification	Polyclonal antibody was purified immunogen affinity chromatography.

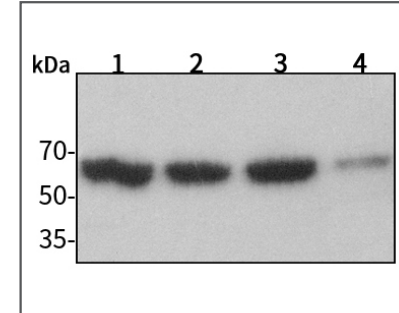
Anti-SHC1 Rabbit pAb



WL04207

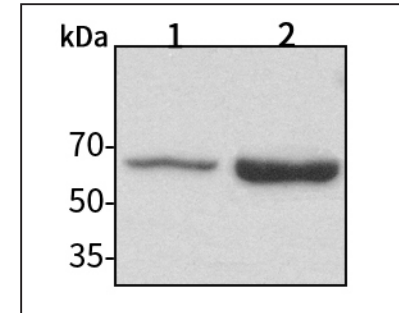
For Research Use Only. Not For Use In Diagnostic Procedures

Product Images



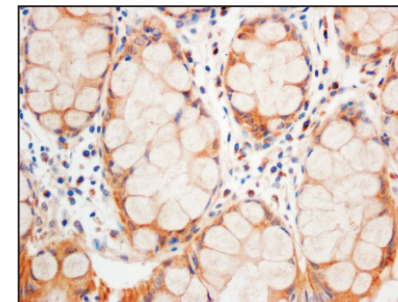
Western blot-Anti-SHC1 pAb

Lane 1: Human HeLa cell lysate 30µg
 Lane 2: Human MCF-7 cell lysate 30µg
 Lane 3: Human HEK293 cell lysate 30µg
 Lane 4: Human A549 cell lysate 30µg
 Separation gel: 10% polyacrylamide
 Electrophoresis: 100V, 4°C, 3h
 Transmembrane: 100V, 4°C, 1.5-2h
 Blocking: 5% w/v nonfat dry milk, 1×TBST, at RT with gentle shaking
 Primary antibody: 1:1000 in blocking buffer, 4°C, overnight
 Secondary antibody-HRP: 1:5000-1:10000 in blocking buffer, RT, 45min
 Detection: ECL, 30s-2min



Western blot-Anti-SHC1 pAb

Lane 1: Mouse heart tissue lysate 30µg
 Lane 2: Rat liver tissue lysate 30µg
 Separation gel: 10% polyacrylamide
 Electrophoresis: 100V, 4°C, 3h
 Transmembrane: 100V, 4°C, 1.5-2h
 Blocking: 5% w/v nonfat dry milk, 1×TBST, at RT with gentle shaking
 Primary antibody: 1:1000 in blocking buffer, 4°C, overnight
 Secondary antibody-HRP: 1:5000-1:10000 in blocking buffer, RT, 45min
 Detection: ECL, 30s-2min



Immunohistochemistry-Anti-SHC1 pAb

Sample: Human colon cancer tissue
 Antigen retrieval: pH 6.0 citrate buffer
 Primary antibody: 1:200, 4°C, overnight
 Secondary antibody-Biotin: 1:150, 37°C, 1h
 Streptavidin-HRP: 1:200, 37°C, 30min
 Visualization: DAB

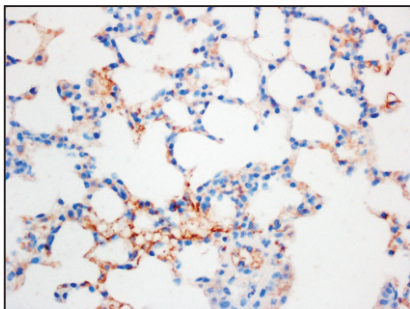
Anti-SHC1 Rabbit pAb



WL04207

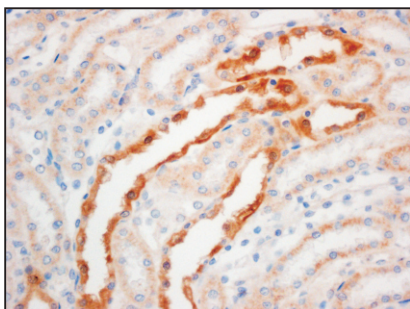
For Research Use Only. Not For Use In Diagnostic Procedures

Product Information



Immunohistochemistry-Anti-SHC1 pAb

Sample: Mouse lung tissue
Antigen retrieval: pH 6.0 citrate buffer
Primary antibody: 1:200, 4°C, overnight
Secondary antibody-Biotin: 1:150, 37°C, 1h
Streptavidin-HRP: 1:200, 37°C, 30min
Visualization: DAB



Immunohistochemistry-Anti-SHC1 pAb

Sample: Rat kidney tissue
Antigen retrieval: pH 6.0 citrate buffer
Primary antibody: 1:200, 4°C, overnight
Secondary antibody-Biotin: 1:150, 37°C, 1h
Streptavidin-HRP: 1:200, 37°C, 30min
Visualization: DAB