

Anti-GCDFP 15 Rabbit pAb



WL04298

For Research Use Only. Not For Use In Diagnostic Procedures

Product Information

Product name	Anti-GCDFP 15 Rabbit pAb	
Source	Rabbit	
Species reactivity	Human	
Tested applications	WB	1:1000-1:2000
Pack size	50/100/200/500/1000µl	
Storage	Store at -20°C. Avoid freeze/thaw cycles.	
Storage buffer	Supplied in 20 mM phosphate (pH 7.5), 150 mM NaCl, 100 µg/ml BSA, 50% glycerol and less than 0.02% sodium azide	

General Information

Background GCDFP-15 (gross cystic disease fluid protein 15), also known as PIP (prolactin-induced protein) is a secretory glycoprotein expressed in benign and malignant breast tumor tissues and in some normal exocrine organs such as sweat, salivary, and lacrimal glands. GCDFP-15 is a marker of apocrine differentiation and is frequently used for assessment of metastases or regional recurrences of breast origin. GCDFP-15 expression is increased by prolactin and androgen and inhibited by estrogen.

Immunogen Polyclonal antibody is produced by immunizing animals with a synthetic peptide of GCDFP 15.

Purification Polyclonal antibody was purified by Protein A affinity chromatography.

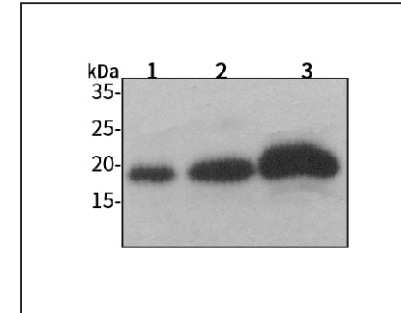
Anti-GCDFP 15 Rabbit pAb



WL04298

For Research Use Only. Not For Use In Diagnostic Procedures

Product Images



Western blot-Anti-GCDFP 15 pAb

Lane 1: Human A549 cell lysate

Lane 2: Human HUVEC cell lysate

Lane 3: Human SW480 cell lysate

All lanes: Anti-GCDFP 15 at 1:1000 dilution

Lysates/proteins at 20-50 µg per lane.

Predicted band size: 17 kDa

Observed band size: 17 kDa