



For Research Use Only. Not For Use In Diagnostic Procedures

Product Information

| | | |
|----------------------------|---|--------------|
| Product name | Anti-Prostate Specific Antigen Rabbit pAb | |
| Source | Rabbit | |
| Species reactivity | Human, Mouse, Rat | |
| Tested applications | Western blot | 1:500-1:1000 |

**Suggested working dilutions are given as a guide only. It is recommended that the user titrates the product for use in their own experiment using appropriate negative and positive controls.*

| | |
|----------------------|-----------------------------|
| Molecular Wt. | Predicted band size: 29 kDa |
| | Observed band size: 34 kDa |

Pack size 50/100/200/500/1000µl

Storage Store at -20°C. **Avoid freeze/thaw cycles.**

Storage buffer Supplied in 20 mM phosphate (pH 7.5), 150 mM NaCl, 100 µg/ml BSA, 50% glycerol and less than 0.02% sodium azide

General Information

Background Kallikreins are a subgroup of serine proteases having diverse physiological functions. Growing evidence suggests that many kallikreins are implicated in carcinogenesis and some have potential as novel cancer and other disease biomarkers.

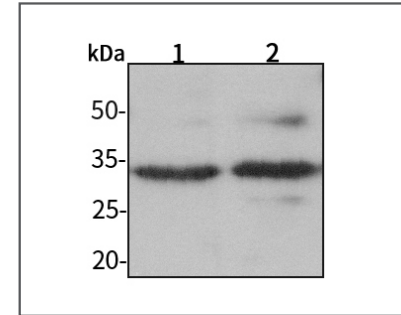
Immunogen Polyclonal antibody is produced by immunizing animals with a synthetic peptide of Prostate Specific Antigen.

Purification Polyclonal antibody was purified by immunogen affinity chromatography.



For Research Use Only. Not For Use In Diagnostic Procedures

Product Images



Western blot-Anti-Prostate Specific Antigen pAb

Lane 1: Human HEK-293 cell lysate 20µg

Lane 2: Human HUVEC cell lysate 20µg

Separation gel: 10% polyacrylamide

Electrophoresis: 100V, 4°C, 3h

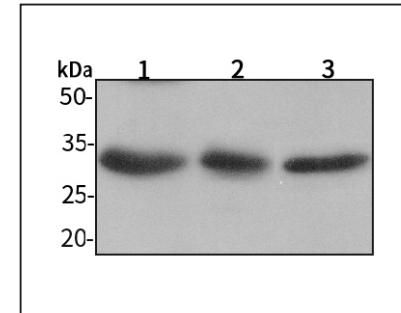
Transmembrane: 100V, 4°C, 1h

Blocking: 5% w/v nonfat dry milk, 1×TBST, at RT with gentle shaking

Primary antibody: 1:1000 in blocking buffer, 4°C, overnight

Secondary antibody (WLA023a) : 1:5000-1:10000, 45min

Detection: ECL, 30s-2min



Western blot-Anti-Prostate Specific Antigen pAb

Lane 1: Mouse kidney tissue lysate 10µg

Lane 2: Mouse heart tissue lysate 10µg

Lane 3: Rat stomach tissue lysate 10µg

Separation gel: 10% polyacrylamide

Electrophoresis: 100V, 4°C, 3h

Transmembrane: 100V, 4°C, 1h

Blocking: 5% w/v nonfat dry milk, 1×TBST, at RT with gentle shaking

Primary antibody: 1:1000 in blocking buffer, 4°C, overnight

Secondary antibody (WLA023a) : 1:5000-1:10000, 45min

Detection: ECL, 30s-2min