

Anti-P-IRE1(S724) Rabbit pAb



WL05299

For Research Use Only. Not For Use In Diagnostic Procedures

Product Information

Product name	Anti-P-IRE1(S724) Rabbit pAb	
Source	Rabbit	
Species reactivity	Human, Mouse, Rat	
Tested applications	Western blot	1:1000-1:2000

**Suggested working dilutions are given as a guide only. It is recommended that the user titrates the product for use in their own experiment using appropriate negative and positive controls.*

Molecular Wt.	110 kDa
Pack size	50/100/200/500/1000 μ l
Storage	Store at -20°C. Avoid freeze/thaw cycles.
Storage buffer	Supplied in 20 mM phosphate (pH 7.5), 150 mM NaCl, 100 μ g/ml BSA, 50% glycerol and less than 0.02% sodium azide

General Information

Background	The accumulation of unfolded proteins within the endoplasmic reticulum (ER) of yeast and mammalian cells activates the unfolded protein response (UPR) pathway and leads to the transcription of ER-specific genes involved in protein folding. One of the players in UPR, IRE1, was first identified in <i>Saccharomyces cerevisiae</i> as a transmembrane serine/threonine kinase. Recently, IRE1 α was shown to mediate the rapid degradation of certain mRNAs based on the ER-localization and primary sequences of their encoded proteins, suggesting a novel mechanism in UPR.
Immunogen	Polyclonal antibody is produced by immunizing animals with a synthetic peptide of P-IRE1(S724).
Purification	Polyclonal antibody was purified by Protein A affinity chromatography.

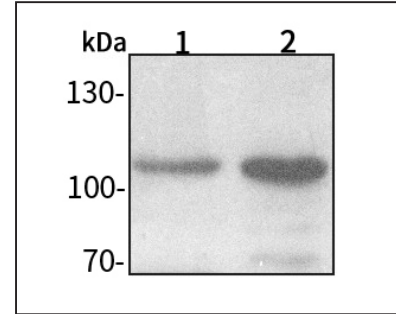
Anti-P-IRE1(S724) Rabbit pAb



WL05299

For Research Use Only. Not For Use In Diagnostic Procedures

Product Images



Western blot-Anti-P-IRE1(S724) pAb

Lane 1: Human HeLa cell lysate 20 μ g
 Lane 2: Human MCF-7 cell lysate 20 μ g
 Separation gel: 8% polyacrylamide
 Electrophoresis: 100V, 4°C, 3h
 Transmembrane: 100V, 4°C, 1h
 Blocking: 5% w/v nonfat dry milk, 1 \times TBST, at RT with gentle shaking
 Primary antibody: 1:1000 in blocking buffer, 4°C, overnight
 Secondary antibody (WLA023a) : 1:5000-1:10000, 45min
 Detection: ECL, 30s-2min