



Anti-FE65 Rabbit pAb

WL05265

For Research Use Only. Not For Use In Diagnostic Procedures

Product Information

Product name	Anti-FE65 Rabbit pAb		
Source	Rabbit		
Species reactivity	Human, Mouse, Rat		
Tested applications	WB	1:500-1:1000	
Pack size	50/100/200/500/1000µl		
Storage	Store at -20°C. Avoid freeze/thaw cycles.		
Storage buffer	Supplied in 20 mM phosphate (pH 7.5), 150 mM NaCl, 100 µg/ml BSA, 50% glycerol and less than 0.02% sodium azide		

General Information

Background APBB1 (Amyloid-beta A4 precursor protein-binding family B member 1) encoded FE65 protein. It is an adaptor protein localized in the nucleus. It was known as a binding partner of APP in the Alzheimer's disease studies, and expressed at high levels in brain especially in cerebellum, hippocampus, and cortex. It interacts with the Alzheimer's disease amyloid precursor protein (APP), transcription factor CP2/LSF/LBP1 and the low-density lipoprotein receptor-related protein.

Immunogen Polyclonal antibody is produced by immunizing animals with a synthetic peptide of Fe65.

Purification Polyclonal antibody was purified by immunogen affinity chromatography.

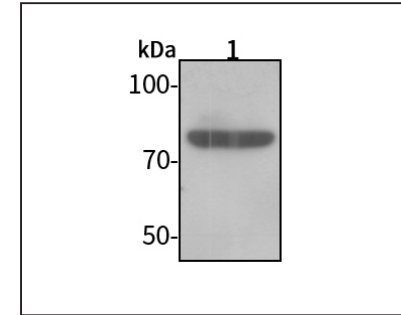


Anti-FE65 Rabbit pAb

WL05265

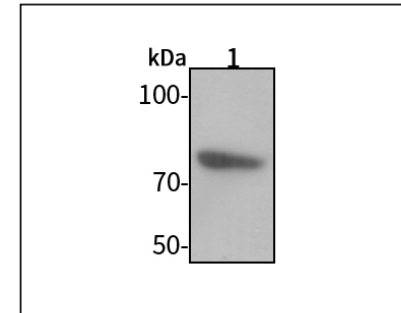
For Research Use Only. Not For Use In Diagnostic Procedures

Product Images



Western blot-Anti-FE65 pAb

Lane 1: Human HeLa cell lysate
 All lanes: Anti-FE65 at 1:1000 dilution
 Lysates/proteins at 20-50 µg per lane.
 Predicted band size: 77 kDa
 Observed band size: 77 kDa



Western blot-Anti-FE65 pAb

Lane 1: Mouse heart tissue lysate
 All lanes: Anti-FE65 at 1:1000 dilution
 Lysates/proteins at 20-50 µg per lane.
 Predicted band size: 77 kDa
 Observed band size: 77 kDa