

Anti-RELB Rabbit pAb



WL04181

For Research Use Only. Not For Use In Diagnostic Procedures

Product Information

Product name	Anti-RELB Rabbit pAb	
Source	Rabbit	
Species reactivity	Mouse, Rat	
Tested applications	Western blot	1:500-1:1000
	<i>*Suggested working dilutions are given as a guide only. It is recommended that the user titrates the product for use in their own experiment using appropriate negative and positive controls.</i>	
Molecular Wt.	62 kDa	
Pack size	50/100/200/500/1000µl	
Storage	Store at -20°C. Avoid freeze/thaw cycles.	
Storage buffer	Supplied in 20 mM phosphate (pH 7.5), 150 mM NaCl, 100 µg/ml BSA, 50% glycerol and less than 0.02% sodium azide	

General Information

Background	The NFκB transcription factor was originally identified as a protein complex consisting of a DNA binding subunit and an associated protein. The DNA binding subunit is functionally related to c-Rel p75 and Rel B p68. The p50 subunit was initially believed to be a functionally unique protein derived from the amino terminus of a precursor designated p105. Rel B does not bind with high affinity to NFκB sites, but heterodimers between Rel B and p50 bind with an affinity comparable to that of p50 NFκB homodimers. NF-κappa-B heterodimeric RelB-p50 and RelB-p52 complexes are transcriptional activators. RELB neither associates with DNA nor with RELA/p65 or REL.
Immunogen	Polyclonal antibody is produced by immunizing animals with a synthetic peptide of RELB.
Purification	Polyclonal antibody was purified by immunogen affinity chromatography.

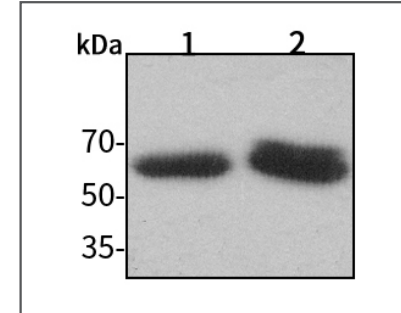
Anti-RELB Rabbit pAb



WL04181

For Research Use Only. Not For Use In Diagnostic Procedures

Product Images



Western blot-Anti-RELB pAb

Lane 1: Mouse kidney tissue lysate 30µg

Lane 2: Rat stomach tissue lysate 30µg

Separation gel: 10% polyacrylamide

Electrophoresis: 100V, 4°C, 3h

Transmembrane: 100V, 4°C, 1.5-2h

Blocking: 5% w/v nonfat dry milk, 1×TBST, at RT with gentle shaking

Primary antibody: 1:1000 in blocking buffer, 4°C, overnight

Secondary antibody-HRP: 1:5000-1:10000 in blocking buffer, RT, 45min

Detection: ECL, 30s-2min