

Anti-Laptm5 Rabbit pAb



WL05612

For Research Use Only. Not For Use In Diagnostic Procedures

Product Information

Product name	Anti-Laptm5 Rabbit pAb		
Source	Rabbit		
Species reactivity	Mouse		
Tested applications	WB	1:500-1:1000	
Pack size	50/100/200/500/1000µl		
Storage	Store at -20°C. Avoid freeze/thaw cycles.		
Storage buffer	Supplied in 20 mM phosphate (pH 7.5), 150 mM NaCl, 100 µg/ml BSA, 50% glycerol and less than 0.02% sodium azide		

General Information

Background This gene encodes a transmembrane receptor that is associated with lysosomes. The encoded protein, also known as E3 protein, may play a role in hematopoiesis.

Immunogen Polyclonal antibody is produced by immunizing animals with a synthetic peptide of Laptm5.

Purification Polyclonal antibody was purified by immunogen affinity chromatography.

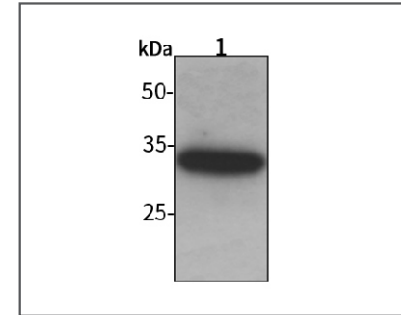
Anti-Laptm5 Rabbit pAb



WL05612

For Research Use Only. Not For Use In Diagnostic Procedures

Product Images



Western blot-Anti-Laptm5 pAb

Lane 1: Mouse brain tissue lysate
 All lanes: Anti-Laptm5 at 1:1000 dilution
 Lysates/proteins at 20-50 µg per lane.
 Predicted band size: 30 kDa
 Observed band size: 30 kDa