

## Anti-Glypican 1 Rabbit pAb



WL05374

For Research Use Only. Not For Use In Diagnostic Procedures

## Product Information

<b>Product name</b>	Anti-Glypican 1 Rabbit pAb	
<b>Source</b>	Rabbit	
<b>Species reactivity</b>	Human	
<b>Tested applications</b>	WB	1:500-1:1000
<b>Pack size</b>	50/100/200/500/1000µl	
<b>Storage</b>	Store at -20°C. <b>Avoid freeze/thaw cycles.</b>	
<b>Storage buffer</b>	Supplied in 20 mM phosphate (pH 7.5), 150 mM NaCl, 100 µg/ml BSA, 50% glycerol and less than 0.02% sodium azide	

## General Information

**Background** Glypican-1 (GPC1), a member of the glycosylphosphatidylinositol anchored cell surface heparan sulfate proteoglycans, is involved with cell adhesion and migration, lipoprotein metabolism, modulation of growth factor activities and anticoagulation.

**Immunogen** Polyclonal antibody is produced by immunizing animals with a synthetic peptide of Glypican 1.

**Purification** Polyclonal antibody was purified by immunogen affinity chromatography.

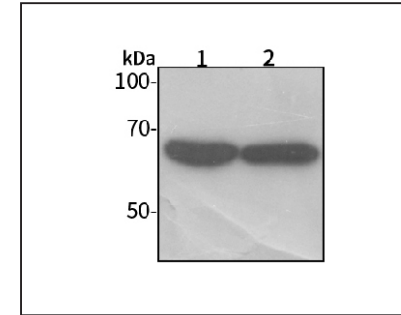
## Anti-Glypican 1 Rabbit pAb



WL05374

For Research Use Only. Not For Use In Diagnostic Procedures

## Product Images



## Western blot-Anti-Glypican 1 pAb

Lane 1: Human SW480 cell lysate

Lane 2: Human A549 cell lysate

All lanes: Anti-Glypican 1 at 1:1000 dilution

Lysates/proteins at 20-50 µg per lane.

Predicted band size: 61 kDa

Observed band size: 61 kDa