

Anti-Cofilin Rabbit pAb



WL04552

For Research Use Only. Not For Use In Diagnostic Procedures

Product Information

Product name	Anti-Cofilin Rabbit pAb	
Source	Rabbit	
Species reactivity	Human, Mouse, Rat	
Tested applications	WB	1:500-1:1000
Pack size	50/100/200/500/1000µl	
Storage	Store at -20°C. Avoid freeze/thaw cycles.	
Storage buffer	Supplied in 20 mM phosphate (pH 7.5), 150 mM NaCl, 100 µg/ml BSA, 50% glycerol and less than 0.02% sodium azide	

General Information

Background

Cofilin is ubiquitously expressed in eukaryotic cells where it binds to Actin. It is a member of ADF (actin-depolymerizing factor)/cofilin family that is a key regulator of actin dynamics and essential for cellular motility, cytokinesis, and endocytosis. Cofilin is a widely distributed intracellular actin-modulating protein that binds and depolymerizes filamentous F-actin and inhibits the polymerization of monomeric G-actin in a pH-dependent manner.

Immunogen

Polyclonal antibody is produced by immunizing animals with a synthetic peptide of Cofilin.

Purification

Polyclonal antibody was purified by immunogen affinity chromatography.

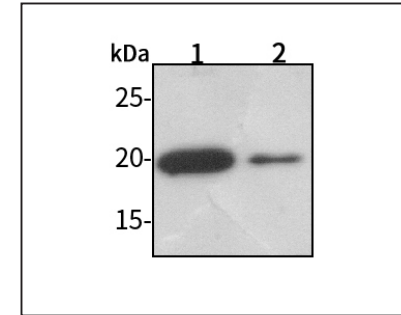
Anti-Cofilin Rabbit pAb



WL04552

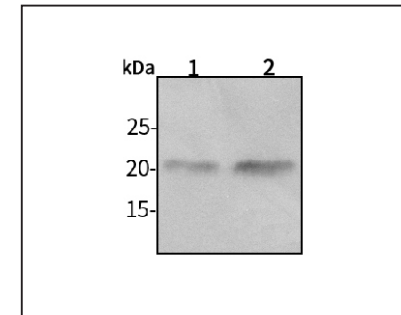
For Research Use Only. Not For Use In Diagnostic Procedures

Product Images



Western blot-Anti-Cofilin pAb

Lane 1: Human HeLa cell lysate
 Lane 2: Human MCF-7 cell lysate
 All lanes: Anti-Cofilin at 1:1000 dilution
 Lysates/proteins at 20-50 µg per lane.
 Predicted band size: 18 kDa
 Observed band size: 20 kDa



Western blot-Anti-Cofilin pAb

Lane 1: Rat colon tissue lysate
 Lane 2: Rat stomach tissue lysate
 All lanes: Anti-Cofilin at 1:1000 dilution
 Lysates/proteins at 20-50 µg per lane.
 Predicted band size: 18 kDa
 Observed band size: 20 kDa