

Anti-CYP11B1 Rabbit pAb



WL05422

For Research Use Only. Not For Use In Diagnostic Procedures

Product Information

Product name	Anti-CYP11B1 Rabbit pAb	
Source	Rabbit	
Species reactivity	Human, Mouse, Rat	
Tested applications	WB	1:1000-1:2000
Pack size	50/100/200/500/1000µl	
Storage	Store at -20°C. Avoid freeze/thaw cycles.	
Storage buffer	Supplied in 20 mM phosphate (pH 7.5), 150 mM NaCl, 100 µg/ml BSA, 50% glycerol and less than 0.02% sodium azide	

General Information

Background

The cytochrome P450 superfamily of enzymes. The cytochrome P450 proteins are monooxygenases which catalyze many reactions involved in drug metabolism and synthesis of cholesterol, steroids and other lipids. This protein localizes to the mitochondrial inner membrane and is involved in the conversion of progesterone to cortisol in the adrenal cortex.

Immunogen

Polyclonal antibody is produced by immunizing animals with a synthetic peptide of CYP11B1.

Purification

Polyclonal antibody was purified by Protein A affinity chromatography.

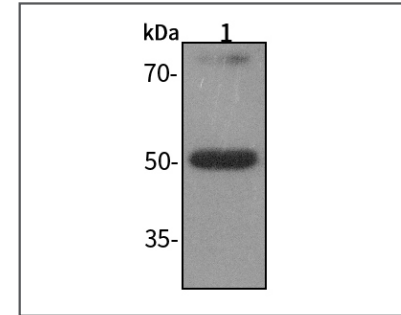
Anti-CYP11B1 Rabbit pAb



WL05422

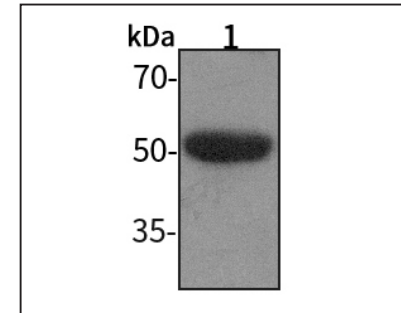
For Research Use Only. Not For Use In Diagnostic Procedures

Product Images



Western blot-Anti-CYP11B1 pAb

Lane 1: Human HUVEC cell lysate
 All lanes: Anti-CYP11B1 at 1:1000 dilution
 Lysates/proteins at 20-50 µg per lane.
 Predicted band size: 50 kDa
 Observed band size: 50 kDa



Western blot-Anti-CYP11B1 pAb

Lane 1: Rat paranephros tissue lysate
 All lanes: Anti-CYP11B1 at 1:1000 dilution
 Lysates/proteins at 20-50 µg per lane.
 Predicted band size: 50 kDa
 Observed band size: 50 kDa