

## Anti-P-FOXO1(s319) Rabbit pAb



WL03634

For Research Use Only. Not For Use In Diagnostic Procedures

## Product Information

<b>Product name</b>	Anti-P-FOXO1(s319) Rabbit pAb	
<b>Source</b>	Rabbit	
<b>Species reactivity</b>	Human, Mouse, Rat	
<b>Tested applications</b>	Western blot	1:1000-1:2000
	<i>*Suggested working dilutions are given as a guide only. It is recommended that the user titrates the product for use in their own experiment using appropriate negative and positive controls.</i>	
<b>Molecular Wt.</b>	70 kDa	
<b>Pack size</b>	50/100/200/500/1000µl	
<b>Storage</b>	Store at -20°C. <b>Avoid freeze/thaw cycles.</b>	
<b>Storage buffer</b>	Supplied in 20 mM phosphate (pH 7.5), 150 mM NaCl, 100 µg/ml BSA, 50% glycerol and less than 0.02% sodium azide	

## General Information

**Background**

FOXO1A belongs to the forkhead family of transcription factors which are characterized by a distinct forkhead domain. FKHR (for forkhead in rhabdomyosarcoma) and FKHL1 are members of the forkhead family of transcription factors. Transcriptional activation of FKHR proteins is regulated by the serine/threonine kinase Akt1, which phosphorylates FKHL1 and results in FKHL1 associating with 14-3-3 proteins and being retained in the cytoplasm. FKHR, also designated forkhead box protein O1A (FOXO1), is a ubiquitously expressed protein that shuttles between the cytoplasm and nucleus.

**Immunogen**

Polyclonal antibody is produced by immunizing animals with a synthetic peptide of P-FOXO1(s319).

**Purification**

Polyclonal antibody was purified by proteinA affinity chromatography.

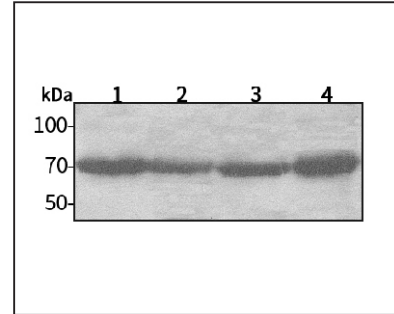
## Anti-P-FOXO1(s319) Rabbit pAb



WL03634

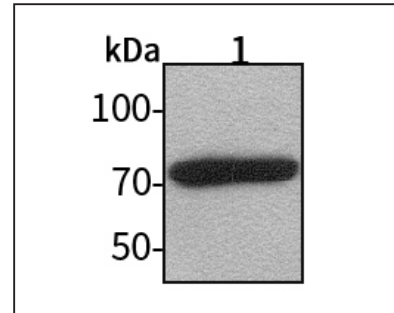
For Research Use Only. Not For Use In Diagnostic Procedures

## Product Images



## Western blot-Anti-P-FOXO1(s319) pAb

Lane 1: Human HeLa cell lysate 30µg  
 Lane 2: Human MCF-7 cell lysate 30µg  
 Lane 3: Human HEK-293 cell lysate 30µg  
 Lane 4: Human SW480 cell lysate 30µg  
**Separation gel:** 8% polyacrylamide  
**Electrophoresis:** 100V, 4°C, 3h  
**Transmembrane:** 100V, 4°C, 1h  
**Blocking:** 5% w/v nonfat dry milk, 1×TBST, at RT with gentle shaking  
**Primary antibody:** 1:1000 in blocking buffer, 4°C, overnight  
**Secondary antibody (WLA023a) :** 1:5000-1:10000, 45min  
**Detection:** ECL, 30s-2min



## Western blot-Anti-P-FOXO1(s319) pAb

Lane 1: Mouse kidney tissue lysate 30µg  
**Separation gel:** 8% polyacrylamide  
**Electrophoresis:** 100V, 4°C, 3h  
**Transmembrane:** 100V, 4°C, 1h  
**Blocking:** 5% w/v nonfat dry milk, 1×TBST, at RT with gentle shaking  
**Primary antibody:** 1:1000 in blocking buffer, 4°C, overnight  
**Secondary antibody (WLA023a) :** 1:5000-1:10000, 45min  
**Detection:** ECL, 30s-2min