

Anti-ATM Rabbit pAb



WL04188

For Research Use Only. Not For Use In Diagnostic Procedures

Product Information

Product name	Anti-ATM Rabbit pAb	
Source	Rabbit	
Species reactivity	Human, Mouse, Rat	
Tested applications	WB	1:1000-1:2000
Pack size	50/100/200/500/1000µl	
Storage	Store at -20°C. Avoid freeze/thaw cycles.	
Storage buffer	Supplied in 20 mM phosphate (pH 7.5), 150 mM NaCl, 100 µg/ml BSA, 50% glycerol and less than 0.02% sodium azide	

General Information

Background	The protein encoded by this gene belongs to the PI3/PI4-kinase family. This protein is an important cell cycle checkpoint kinase that phosphorylates; thus, it functions as a regulator of a wide variety of downstream proteins, including tumor suppressor proteins p53 and BRCA1, checkpoint kinase CHK2, checkpoint proteins RAD17 and RAD9, and DNA repair protein NBS1. Activation of ATM by autophosphorylation on Ser1981 occurs in response to exposed DNA double stranded breaks. The Atm gene is mutated in the autosomal recessive disorder ataxia telangiectasia (AT) that is characterized by cerebellar degeneration (ataxia) and the appearance of dilated blood vessels (telangiectases) in the conjunctivae of the eyes.
Immunogen	Polyclonal antibody is produced by immunizing animals with a synthetic peptide of ATM.
Purification	Polyclonal antibody was purified by Protein A affinity chromatography.

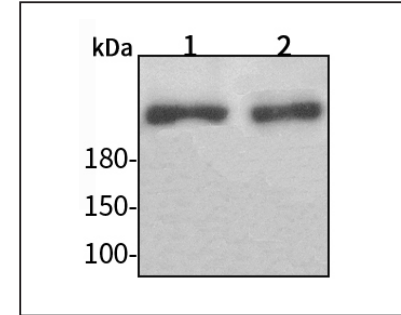
Anti-ATM Rabbit pAb



WL04188

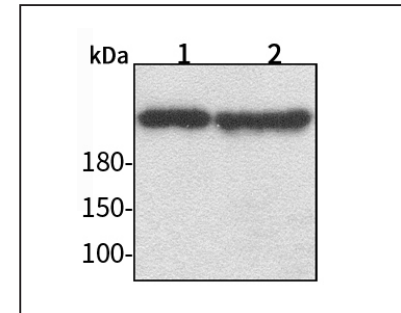
For Research Use Only. Not For Use In Diagnostic Procedures

Product Images



Western blot-Anti-ATM pAb

Lane 1: Human HeLa cell lysate
 Lane 2: Human HEK-293 cell lysate
 All lanes: Anti-ATM at 1:1000 dilution
 Lysates/proteins at 20-50 µg per lane.
 Predicted band size: 370 kDa
 Observed band size: 370 kDa



Western blot-Anti-ATM pAb

Lane 1: Mouse heart tissue lysate
 Lane 2: Rat colon tissue lysate
 All lanes: Anti-ATM at 1:1000 dilution
 Lysates/proteins at 20-50 µg per lane.
 Predicted band size: 370 kDa
 Observed band size: 370 kDa