

## Anti-Tyrosinase Rabbit pAb



WL01000

For Research Use Only. Not For Use In Diagnostic Procedures

## Product Information

<b>Product name</b>	Anti-Tyrosinase Rabbit pAb		
<b>Source</b>	Rabbit		
<b>Species reactivity</b>	Human, Mouse, Rat		
<b>Tested applications</b>	WB	1:1000-1:2000	
	IF	1:500	
<b>Cellular localization</b>	Secreted and Cell membrane		
<b>Pack size</b>	50/100/200/500/1000µl		
<b>Storage</b>	Store at -20°C. <b>Avoid freeze/thaw cycles.</b>		
<b>Storage buffer</b>	Supplied in 20 mM phosphate (pH 7.5), 150 mM NaCl, 100 µg/ml BSA, 50% glycerol and less than 0.02% sodium azide		

## General Information

**Background**

Tyrosinase (TYR), a type I membrane protein and copper-containing enzyme, is involved in the production of melanin, the primary pigment found in vertebrates. Tyrosinase is the rate limiting enzyme catalyzing the first two steps in the melanin biosynthesis, converting tyrosine to L-dihydroxy-phenylalanine (DOPA) and subsequently to DOPAquinone. Tyrosinase is implicated to be an antigen target for melanoma vaccines. Anti-tyrosinase antibodies may be applied for immunotherapy in patients with malignant melanoma.

**Immunogen**

Polyclonal antibody is produced by immunizing animals with a synthetic peptide of Tyrosinase.

**Purification**

Polyclonal antibody was purified by Protein A affinity chromatography.

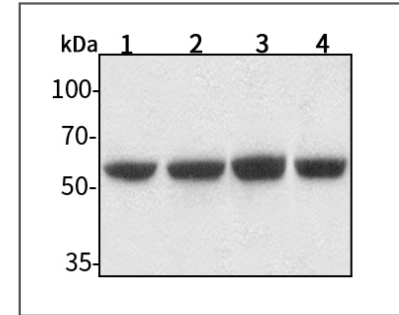
## Anti-Tyrosinase Rabbit pAb



WL01000

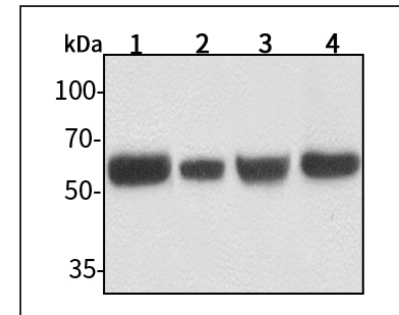
For Research Use Only. Not For Use In Diagnostic Procedures

## Product Images



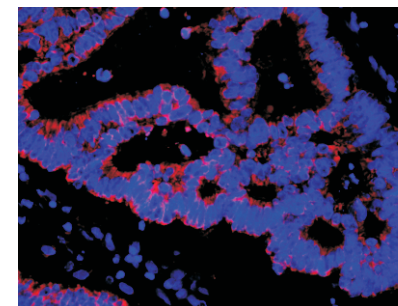
Western blot-Anti-Tyrosinase pAb

Lane 1: Human Hela cell lysate  
 Lane 2: Human BGC-823 cell lysate  
 Lane 3: Human MGC-803 cell lysate  
 Lane 4: Human MCF-7 cell lysate  
 All lanes: Anti-Tyrosinase at 1:1000 dilution  
 Lysates/proteins at 20-50 µg per lane.  
 Predicted band size: 60 kDa  
 Observed band size: 60 kDa



Western blot-Anti-Tyrosinase pAb

Lane 1: Mouse kidney tissue lysate  
 Lane 2: Mouse heart tissue lysate  
 Lane 3: Rat liver tissue lysate  
 Lane 4: Rat stomach tissue lysate  
 All lanes: Anti-Tyrosinase at 1:1000 dilution  
 Lysates/proteins at 20-50 µg per lane.  
 Predicted band size: 60 kDa  
 Observed band size: 60 kDa



Immunofluorescence-Anti-Tyrosinase pAb

Immunofluorescence analysis of paraffin-embedded human rectum cancer using anti-Tyrosinase Rabbit Antibody at 1:500 dilution. Perform heat mediated antigen retrieval with Tris-EDTA buffer pH 9.0

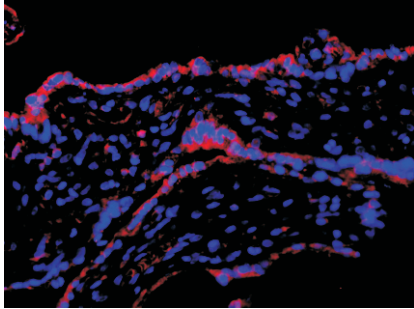
## Anti-Tyrosinase Rabbit pAb



WL01000

For Research Use Only. Not For Use In Diagnostic Procedures

### Product Information



#### Immunofluorescence-Anti-Tyrosinase pAb

Immunofluorescence analysis of paraffin-embedded human eclampsia placenta using anti-Tyrosinase Rabbit Antibody at 1:500 dilution.  
Perform heat mediated antigen retrieval with Tris-EDTA buffer pH 9.0