

Anti-GR Rabbit pAb



WL02695

For Research Use Only. Not For Use In Diagnostic Procedures

Product Information

Product name	Anti-Glucocorticoid Receptor /GR Rabbit pAb		
Source	Rabbit		
Species reactivity	Human, Mouse, Rat		
Tested applications	WB	1:1000-1:2000	
	IHC	1:200	
Cellular localization	Secreted and Cell membrane		
Pack size	50/100/200/500/1000µl		
Storage	Store at -20°C. Avoid freeze/thaw cycles.		
Storage buffer	Supplied in 20 mM phosphate (pH 7.5), 150 mM NaCl, 100 µg/ml BSA, 50% glycerol and less than 0.02% sodium azide		

General Information

Background

The glucocorticoid receptor (GR, or GCR) also known as NR3C1 (nuclear receptor subfamily 3, group C, member 1) is the receptor to which cortisol and other glucocorticoids bind. GR is composed of several conserved structural elements, including a carboxy-terminal ligand-binding domain, a neighboring hinge region containing nuclear localization signals, a central zinc-finger-containing DNA-binding domain, and an amino-terminal variable region that participates in ligand-independent gene transcription. GR has also been shown to be the limiting factor in the induction of gene expression by glucocorticoids. More importantly, mutant GRs lacking the signaling domain remain constitutively active.

Immunogen

Polyclonal antibody is produced by immunizing animals with a synthetic peptide of Glucocorticoid Receptor /GR.

Purification

Polyclonal antibody was purified by Protein A affinity chromatography.

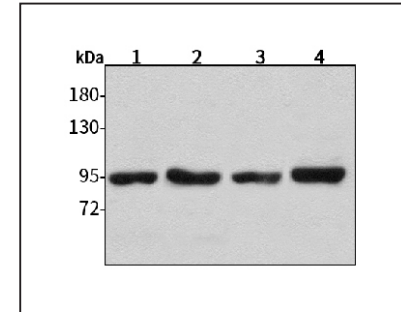
Anti-GR Rabbit pAb



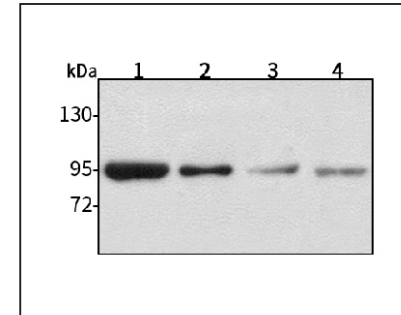
WL02695

For Research Use Only. Not For Use In Diagnostic Procedures

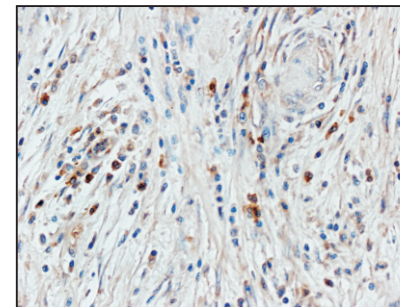
Product Images

**Western blot-Anti-Glucocorticoid Receptor /GR pAb**

Lane 1: Human HepG2 cell lysate
 Lane 2: Human MGC-803 cell lysate
 Lane 3: Human SGC-7901 cell lysate
 Lane 4: Human MCF-7 cell lysate
 All lanes: Anti-Glucocorticoid Receptor /GR at 1:1000 dilution
 Lysates/proteins at 20-50 µg per lane.
 Predicted band size: 86 kDa
 Observed band size: 95 kDa

**Western blot-Anti-Glucocorticoid Receptor /GR pAb**

Lane 1: Mouse heart tissue lysate
 Lane 2: Mouse lung tissue lysate
 Lane 3: Rat brain tissue lysate
 Lane 4: Rat stomach tissue lysate
 All lanes: Anti-Glucocorticoid Receptor /GR at 1:1000 dilution
 Lysates/proteins at 20-50 µg per lane.
 Predicted band size: 86 kDa
 Observed band size: 95 kDa

**Immunohistochemistry-Anti-Glucocorticoid Receptor /GR pAb**

Immunohistochemical analysis of paraffin-embedded human colon cancer using anti-Glucocorticoid Receptor /GR Rabbit Antibody at 1:200 dilution. Perform heat mediated antigen retrieval with Tris-EDTA buffer pH 9.0