

Anti-ErbB-4 Rabbit pAb



WL02615

For Research Use Only. Not For Use In Diagnostic Procedures

Product Information

Product name	Anti-ErbB-4 Rabbit pAb	
Source	Rabbit	
Species reactivity	Human	
Tested applications	WB	1:1000-1:2000
Pack size	50/100/200/500/1000µl	
Storage	Store at -20°C. Avoid freeze/thaw cycles.	
Storage buffer	Supplied in 20 mM phosphate (pH 7.5), 150 mM NaCl, 100 µg/ml BSA, 50% glycerol and less than 0.02% sodium azide	

General Information

Background	ErbB4/HER4 is a receptor tyrosine kinase that belongs to the human epidermal growth factor receptor (EGFR) family. ErbB4 is ubiquitously expressed with the highest expression occurring in brain and heart. Proteolytic cleavage of ErbB-4 is promoted by the binding of heregulin. The expression of ErbB4 in breast cancer, pediatric brain cancer and other types of carcinomas has been reported in research studies suggesting that ErbB4 expression is involved in both normal tissue development and carcinogenesis.
Immunogen	Polyclonal antibody is produced by immunizing animals with a synthetic peptide of ErbB-4.
Purification	Polyclonal antibody was purified by Protein A affinity chromatography.

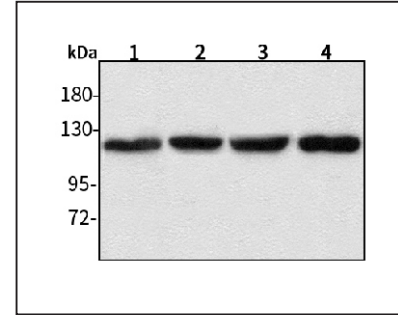
Anti-ErbB-4 Rabbit pAb



WL02615

For Research Use Only. Not For Use In Diagnostic Procedures

Product Images



Western blot-Anti-ErbB-4 pAb

Lane 1: Human HeLa cell lysate
 Lane 2: Human MGC-803 cell lysate
 Lane 3: Human SGC-7901 cell lysate
 Lane 4: Human HEK-293 cell lysate
 All lanes: Anti-ErbB-4 at 1:1000 dilution
 Lysates/proteins at 20-50 µg per lane.
 Predicted band size: 147 kDa
 Observed band size: 120 kDa