

## Anti-EPO Rabbit pAb



WL01513

For Research Use Only. Not For Use In Diagnostic Procedures

## Product Information

<b>Product name</b>	Anti-EPO Rabbit pAb	
<b>Source</b>	Rabbit	
<b>Species reactivity</b>	Human, Mouse, Rat	
<b>Tested applications</b>	WB	1:500-1:1000
<b>Pack size</b>	50/100/200/500/1000µl	
<b>Storage</b>	Store at -20°C. <b>Avoid freeze/thaw cycles.</b>	
<b>Storage buffer</b>	Supplied in 20 mM phosphate (pH 7.5), 150 mM NaCl, 100 µg/ml BSA, 50% glycerol and less than 0.02% sodium azide	

## General Information

## Background

Erythropoietin, or Epo, is the primary factor responsible for regulating erythropoiesis during steady-state conditions and in response to blood loss and hemorrhage in the adult organism. It is a member of the EPO/TPO family and encodes a secreted, glycosylated cytokine composed of four alpha helical bundles. The protein is found in the plasma and regulates red cell production by promoting erythroid differentiation and initiating hemoglobin synthesis. In addition, Epo has also been shown to play a role in primitive embryonic erythropoiesis. Overexpression of Epo is associated with several pathophysiological conditions, such as polycythemia vera.

## Immunogen

Polyclonal antibody is produced by immunizing animals with a synthetic peptide of EPO.

## Purification

Polyclonal antibody was purified by immunogen affinity chromatography.

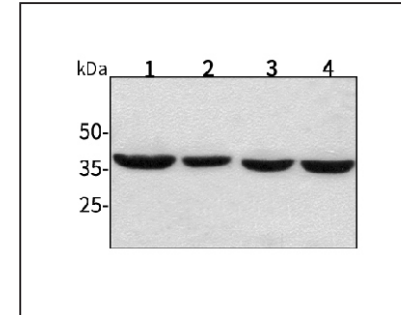
## Anti-EPO Rabbit pAb



WL01513

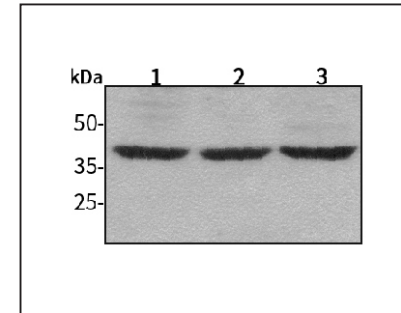
For Research Use Only. Not For Use In Diagnostic Procedures

## Product Images



## Western blot-Anti-EPO pAb

Lane 1: Human HepG2 cell lysate  
 Lane 2: Human Hela cell lysate  
 Lane 3: Human BGC-823 cell lysate  
 Lane 4: Human MGC-803 cell lysate  
 All lanes: Anti-EPO at 1:1000 dilution  
 Lysates/proteins at 20-50 µg per lane.  
 Predicted band size: 21 kDa  
 Observed band size: 37 kDa



## Western blot-Anti-EPO pAb

Lane 1: Mouse kidney tissue lysate  
 Lane 2: Mouse heart tissue lysate  
 Lane 3: Rat lung tissue lysate  
 Lane 4: Rat colon tissue lysate  
 All lanes: Anti-EPO at 1:1000 dilution  
 Lysates/proteins at 20-50 µg per lane.  
 Predicted band size: 21 kDa  
 Observed band size: 37 kDa