

Anti-Chk2 Rabbit pAb



WL03657

For Research Use Only. Not For Use In Diagnostic Procedures

Product Information

Product name	Anti-Chk2 Rabbit pAb	
Source	Rabbit	
Species reactivity	Human, Mouse, Rat	
Tested applications	WB	1:1000-1:2000
Pack size	50/100/200/500/1000µl	
Storage	Store at -20°C. Avoid freeze/thaw cycles.	
Storage buffer	Supplied in 20 mM phosphate (pH 7.5), 150 mM NaCl, 100 µg/ml BSA, 50% glycerol and less than 0.02% sodium azide	

General Information

Background

Cell cycle events are regulated by the sequential activation and deactivation of cyclin dependent kinases (Cdks) and by proteolysis of cyclins. Chk1 and Chk2 are involved in these processes as regulators of Cdks. Chk2 is the mammalian orthologue of the budding yeast Rad53 and fission yeast Cds1 checkpoint kinases. The amino-terminal domain of Chk2 contains a series of seven serine or threonine residues each followed by glutamine (SQ or TQ motif). Phosphorylation at Thr68 is a prerequisite for the subsequent activation step, which is attributable to autophosphorylation of Chk2 at residues Thr383 and Thr387 in the activation loop of the kinase domain.

Immunogen

Polyclonal antibody is produced by immunizing animals with a synthetic peptide of Chk2.

Purification

Polyclonal antibody was purified by Protein A affinity chromatography.

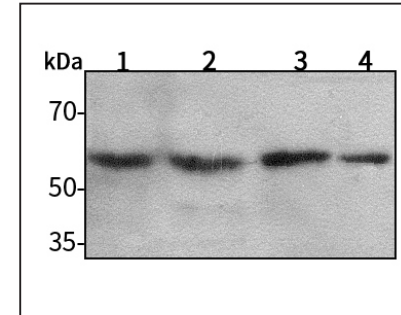
Anti-Chk2 Rabbit pAb



WL03657

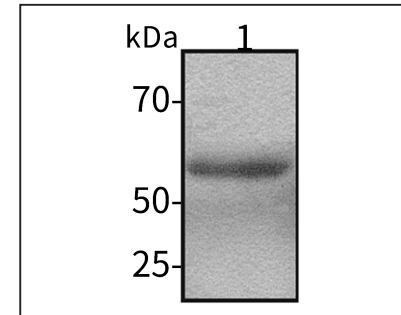
For Research Use Only. Not For Use In Diagnostic Procedures

Product Images



Western blot-Anti-Chk2 pAb

Lane 1: Human HEK-293 cell lysate
 Lane 2: Human A549 cell lysate
 Lane 3: Human BGC-823 cell lysate
 Lane 4: Human SW480 cell lysate
 All lanes: Anti-Chk2 at 1:1000 dilution
 Lysates/proteins at 20-50 µg per lane.
 Predicted band size: 61 kDa
 Observed band size: 61 kDa



Western blot-Anti-Chk2 pAb

Lane 1: Mouse kidney tissue lysate
 All lanes: Anti-Chk2 at 1:1000 dilution
 Lysates/proteins at 20-50 µg per lane.
 Predicted band size: 61 kDa
 Observed band size: 61 kDa