

Anti-Integrin  $\beta$ 2 Rabbit pAb

WL02673

For Research Use Only. Not For Use In Diagnostic Procedures

## Product Information

<b>Product name</b>	Anti-Integrin $\beta$ 2 Rabbit pAb	
<b>Source</b>	Rabbit	
<b>Species reactivity</b>	Human	
<b>Tested applications</b>	WB	1:500-1:1000
<b>Pack size</b>	50/100/200/500/1000 $\mu$ l	
<b>Storage</b>	Store at -20°C. <b>Avoid freeze/thaw cycles.</b>	
<b>Storage buffer</b>	Supplied in 20 mM phosphate (pH 7.5), 150 mM NaCl, 100 $\mu$ g/ml BSA, 50% glycerol and less than 0.02% sodium azide	

## General Information

**Background**

Integrin beta-2 (CD18) is a protein that in humans is encoded by the ITGB2 gene. Integrins are integral cell-surface proteins composed of an alpha chain and a beta chain. Integrins are known to participate in cell adhesion as well as cell-surface mediated signalling. In humans lack of CD18 causes Leukocyte Adhesion Deficiency, a disease defined by a lack of leukocyte extravasation from blood into tissues. The beta 2 integrins have also been found in a soluble form. Signals transduced by integrins play a role in many biological processes, including cell growth, differentiation, migration and apoptosis.

**Immunogen**

Polyclonal antibody is produced by immunizing animals with a synthetic peptide of Integrin  $\beta$ 2.

**Purification**

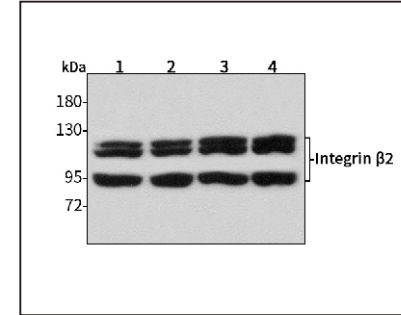
Polyclonal antibody was purified by immunogen affinity chromatography.

Anti-Integrin  $\beta$ 2 Rabbit pAb

WL02673

For Research Use Only. Not For Use In Diagnostic Procedures

## Product Images

Western blot-Anti-Integrin  $\beta$ 2 pAb

Lane 1: Human HepG2 cell lysate

Lane 2: Human Hela cell lysate

Lane 3: Human BGC-823 cell lysate

Lane 4: Human MGC-803 cell lysate

All lanes: Anti-Integrin  $\beta$ 2 at 1:1000 dilutionLysates/proteins at 20-50  $\mu$ g per lane.

Predicted band size: 85 kDa

Observed band size: 95 kDa