

Anti-Caspase-1/Cleaved Caspase-1 Rabbit pAb

WL03450

For Research Use Only. Not For Use In Diagnostic Procedures

Product Information

Product name	Anti-Caspase-1/Cleaved Caspase-1 Rabbit pAb	
Source	Rabbit	
Species reactivity	Human, Mouse, Rat	
Tested applications	WB	1:1000-1:2000
	IHC	1:100-1:200
Cellular localization	Secreted and Cell membrane	
Pack size	50/100/200/500/1000µl	
Storage	Store at -20°C. Avoid freeze/thaw cycles.	
Storage buffer	Supplied in 20 mM phosphate (pH 7.5), 150 mM NaCl, 100 µg/ml BSA, 50% glycerol and less than 0.02% sodium azide	

General Information

Background	Caspase-1, or interleukin-1 β converting enzyme (ICE/ICE α), is a class I cysteine protease, which also includes caspases -4, -5, -11, and -12. Caspase-1 promotes maturation of interleukin IL-1 β and interleukin18 (IL-18) by proteolytic cleavage of precursor forms into biologically active pro-inflammatory cytokines. Active caspase-1, a (p20/p10) $_2$ tetramer, is necessary and sufficient for cleavage of precursor IL-1 as well as for induction of apoptosis in some cell lines. The human Caspase-1 gene maps to chromosome 2q14 and encodes a cytoplasmic protein expressed in liver, heart, skeletal muscle kidney and testis. Caspase-1 has been implicated in inflammation, septic shock, and other situations such as wound healing and the growth of certain leukemias.
Immunogen	Polyclonal antibody is produced by immunizing animals with a synthetic peptide of Caspase-1/Cleaved Caspase-1.

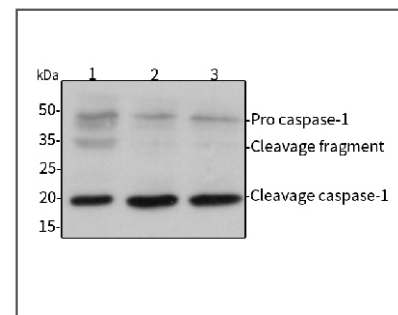
Purification Polyclonal antibody was purified by Protein A affinity chromatography.

Anti-Caspase-1/Cleaved Caspase-1 Rabbit pAb

WL03450

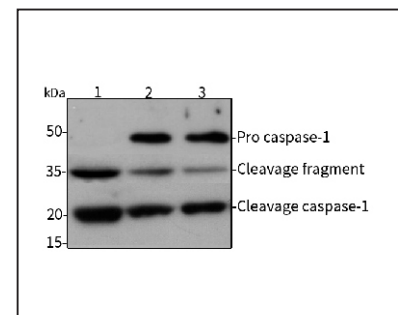
For Research Use Only. Not For Use In Diagnostic Procedures

Product Images



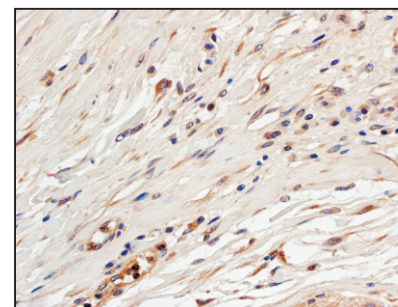
Western blot-Anti-Caspase-1/Cleaved Caspase-1 pAb

Lane 1: Human HepG2 cell lysate
Lane 2: Human Hela cell lysate
Lane 3: Human BGC-823 cell lysate
All lanes: Anti-Caspase-1/Cleaved Caspase-1 at 1:1000 dilution
 Lysates/proteins at 20-50 µg per lane.
 Predicted band size: 20,35-45 kDa
 Observed band size: 20,35-45 kDa



Western blot-Anti-Caspase-1/Cleaved Caspase-1 pAb

Lane 1: Mouse liver tissue lysate
Lane 2: Mouse brain tissue lysate
Lane 3: Rat lung tissue lysate
All lanes: Anti-Caspase-1/Cleaved Caspase-1 at 1:1000 dilution
 Lysates/proteins at 20-50 µg per lane.
 Predicted band size: 20,35-45 kDa
 Observed band size: 20,35-45 kDa



Immunohistochemistry-Anti-Caspase-1/Cleaved Caspase-1 pAb

Immunohistochemical analysis of paraffin-embedded human colon cancer using anti-Caspase-1/Cleaved Caspase-1 Rabbit Antibody at 1:200 dilution. Perform heat mediated antigen retrieval with Tris-EDTA buffer pH 9.0

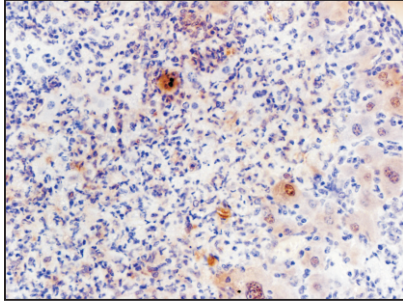


Anti-Caspase-1/Cleaved Caspase-1 Rabbit pAb

WL03450

For Research Use Only. Not For Use In Diagnostic Procedures

Product Information



Immunohistochemistry-Anti-Caspase-1/Cleaved Caspase-1 pAb

Immunohistochemical analysis of paraffin-embedded mouse liver cancer using anti-Caspase-1/Cleaved Caspase-1 Rabbit Antibody at 1:200 dilution. Perform heat mediated antigen retrieval with Tris-EDTA buffer pH 9.0