

Anti-PKC  $\zeta$  Rabbit pAb

WL02092

For Research Use Only. Not For Use In Diagnostic Procedures

## Product Information

<b>Product name</b>	Anti-PKC $\zeta$ Rabbit pAb	
<b>Source</b>	Rabbit	
<b>Species reactivity</b>	Human	
<b>Tested applications</b>	Western blot	1:1000-1:2000
	<i>*Suggested working dilutions are given as a guide only. It is recommended that the user titrates the product for use in their own experiment using appropriate negative and positive controls.</i>	
<b>Molecular Wt.</b>	80 kDa	
<b>Pack size</b>	50/100/200/500/1000 $\mu$ l	
<b>Storage</b>	Store at -20°C. <b>Avoid freeze/thaw cycles.</b>	
<b>Storage buffer</b>	Supplied in 20 mM phosphate (pH 7.5), 150 mM NaCl, 100 $\mu$ g/ml BSA, 50% glycerol and less than 0.02% sodium azide	

## General Information

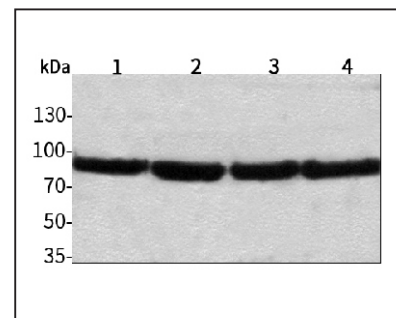
<b>Background</b>	Activation of protein kinase C (PKC) is one of the earliest events in a cascade that controls a variety of cellular responses, including secretion, gene expression, proliferation, and muscle contraction. Protein kinase C (PKC) zeta is a member of the PKC family of serine/threonine kinases which are involved in a variety of cellular processes such as proliferation, differentiation and secretion. Unlike the classical PKC isoenzymes which are calcium-dependent, PKC zeta exhibits a kinase activity which is independent of calcium and diacylglycerol but not of phosphatidylserine. Furthermore, it is insensitive to typical PKC inhibitors and cannot be activated by phorbol ester. Unlike the classical PKC isoenzymes, it has only a single zinc finger module. These structural and biochemical properties indicate that the zeta subspecies is related to, but distinct from other isoenzymes of PKC.
<b>Immunogen</b>	Polyclonal antibody is produced by immunizing animals with a synthetic peptide of PKC $\zeta$ .
<b>Purification</b>	Polyclonal antibody was purified by protein A affinity chromatography.

Anti-PKC  $\zeta$  Rabbit pAb

WL02092

For Research Use Only. Not For Use In Diagnostic Procedures

## Product Images

Western blot-Anti-PKC  $\zeta$  pAbLane 1: Human HepG2 cell lysate 30 $\mu$ gLane 2: Human Hela cell lysate 30 $\mu$ gLane 3: Human BGC-823 cell lysate 30 $\mu$ gLane 4: Human MGC-803 cell lysate 30 $\mu$ g

Separation gel: 8% polyacrylamide

Electrophoresis: 100V, 4°C, 3h

Transmembrane: 100V, 4°C, 1h

Blocking: 5% w/v nonfat dry milk, 1 $\times$  TBST, at RT with gentle shaking

Primary antibody: 1:1000 in blocking buffer, 4°C, overnight

Visualization: ECL, 30s-2min