

Anti-BCL9 Rabbit pAb



WL04993

For Research Use Only. Not For Use In Diagnostic Procedures

Product Information

Product name	Anti-BCL9 Rabbit pAb		
Source	Rabbit		
Species reactivity	Human, Mouse, Rat		
Tested applications	WB	1:500-1:1000	
Pack size	50/100/200/500/1000 μ l		
Storage	Store at -20°C. Avoid freeze/thaw cycles.		
Storage buffer	Supplied in 20 mM phosphate (pH 7.5), 150 mM NaCl, 100 μ g/ml BSA, 50% glycerol and less than 0.02% sodium azide		

General Information

Background	BCL9 is associated with B-cell acute lymphoblastic leukemia. It may be a target of translocation in B-cell malignancies with abnormalities of 1q21. Its function is unknown. The overexpression of BCL9 may be of pathogenic significance in B-cell malignancies.
-------------------	---

Immunogen	Polyclonal antibody is produced by immunizing animals with a synthetic peptide of BCL9.
------------------	---

Purification	Polyclonal antibody was purified by immunogen affinity chromatography.
---------------------	--

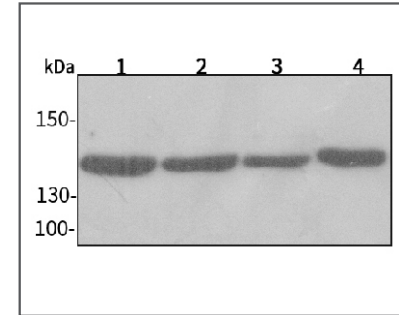
Anti-BCL9 Rabbit pAb



WL04993

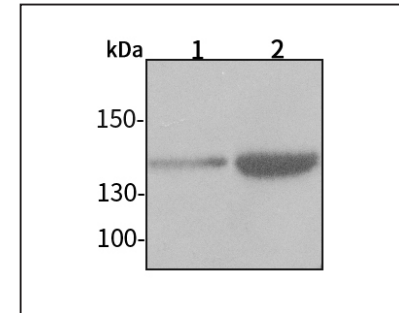
For Research Use Only. Not For Use In Diagnostic Procedures

Product Images



Western blot-Anti-BCL9 pAb

Lane 1: Human HeLa cell lysate
 Lane 2: Human MCF-7 cell lysate
 Lane 3: Human HEK-293 cell lysate
 Lane 4: Human HUVEC cell lysate
 All lanes: Anti-BCL9 at 1:1000 dilution
 Lysates/proteins at 20-50 μ g per lane.
 Predicted band size: 149 kDa
 Observed band size: 149 kDa



Western blot-Anti-BCL9 pAb

Lane 1: Mouse heart tissue lysate
 Lane 2: Rat lung tissue lysate
 All lanes: Anti-BCL9 at 1:1000 dilution
 Lysates/proteins at 20-50 μ g per lane.
 Predicted band size: 149 kDa
 Observed band size: 149 kDa