

## Anti-Dnmt3b Rabbit pAb



WL06255

For Research Use Only. Not For Use In Diagnostic Procedures

## Product Information

<b>Product name</b>	Anti-YTHDF1 Rabbit pAb
<b>Source</b>	Rabbit
<b>Species reactivity</b>	Human, Mouse, Rat
<b>Tested applications</b>	WB 1:1000
<b>Pack size</b>	50/100/200/500/1000µl
<b>Storage</b>	Store at -20°C. <b>Avoid freeze/thaw cycles.</b>
<b>Storage buffer</b>	Supplied in 20 mM phosphate (pH 7.5), 150 mM NaCl, 100 µg/ml BSA, 50% glycerol and less than 0.02% sodium azide

## General Information

**Background** DNMT3B is a DNA-(cytosine C5)-methyltransferase that is responsible for establishing the methylation patterns in cooperation with DNMT3A through the de novo methylation pathway. It is essential for the establishment of DNA methylation patterns during development. CpG methylation is an epigenetic modification that is important for embryonic development, imprinting, and X-chromosome inactivation.

**Immunogen** Polyclonal antibody is produced by immunizing animals with a synthetic peptide of Dnmt3b.

**Purification** Polyclonal antibody was purified by immunogen affinity chromatography.

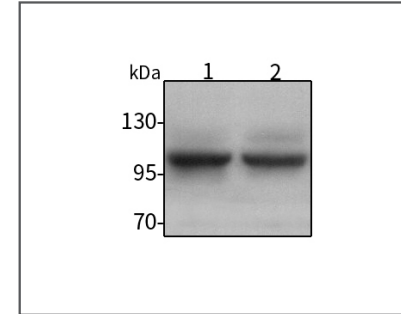
## Anti-Dnmt3b Rabbit pAb



WL06255

For Research Use Only. Not For Use In Diagnostic Procedures

## Product Images



## Western blot-Anti-Dnmt3b pAb

Lane 1: Human HEK-293 cell lysate

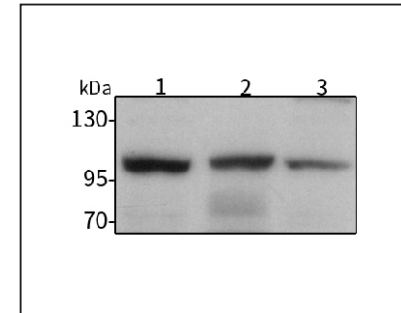
Lane 2: Human HCT116 cell lysate

All lanes: Anti-Dnmt3b at 1:1000 dilution

Lysates/proteins at 20-50 µg per lane.

Predicted band size: 97 kDa

Observed band size: 97 kDa



## Western blot-Anti-Dnmt3b pAb

Lane 1: Mouse testis tissue lysate

Lane 2: Mouse skin tissue lysate

Lane 3: Rat kidney tissue lysate

All lanes: Anti-Dnmt3b at 1:1000 dilution

Lysates/proteins at 20-50 µg per lane.

Predicted band size: 97 kDa

Observed band size: 97 kDa