

Anti-PIN1 Rabbit pAb



WL03053

For Research Use Only. Not For Use In Diagnostic Procedures

Product Information

Product name	Anti-PIN1 Rabbit pAb	
Source	Rabbit	
Species reactivity	Human, Mouse, Rat	
Tested applications	Western blot	1:1000-1:2000
	<i>*Suggested working dilutions are given as a guide only. It is recommended that the user titrates the product for use in their own experiment using appropriate negative and positive controls.</i>	
Molecular Wt.	18 kDa	
Pack size	50/100/200/500/1000µl	
Storage	Store at -20°C. Avoid freeze/thaw cycles.	
Storage buffer	Supplied in 20 mM phosphate (pH 7.5), 150 mM NaCl, 100 µg/ml BSA, 50% glycerol and less than 0.02% sodium azide	

General Information

Background PIN1 is a peptidyl-prolyl cis/trans isomerase (PPlase), which specifically binds to phosphoserine-proline or phosphothreonine-proline bonds in mitotic phosphoproteins. Pin1 is a small (18 kDa) protein with two distinct functional domains: an amino-terminal WW domain and a carboxy-terminal PPlase domain. Pin1 interacts with several mitotic phosphoproteins, including Plk1, cdc25C and cdc27, and is thought to act as a phosphorylation-dependent PPlase for these target molecules.

Immunogen Polyclonal antibody is produced by immunizing animals with recombinant protein of PIN1.

Purification Polyclonal antibody was purified by Protein A affinity chromatography.

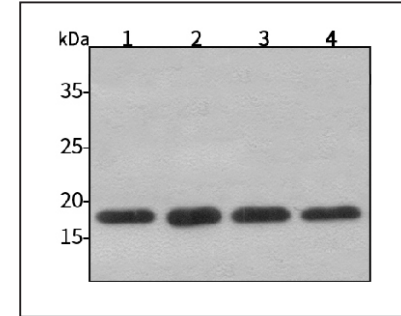
Anti-PIN1 Rabbit pAb



WL03053

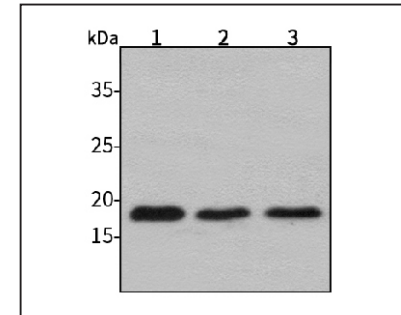
For Research Use Only. Not For Use In Diagnostic Procedures

Product Images



Western blot-Anti-PIN1 pAb

Lane 1: Human HepG2 cell lysate 30µg
 Lane 2: Human Hela cell lysate 30µg
 Lane 3: Human BGC-823 cell lysate 30µg
 Lane 4: Human MGC-803 cell lysate 30µg
 Separation gel: 15% polyacrylamide
 Electrophoresis: 100V, 4°C, 3h
 Transmembrane: 100V, 4°C, 1h
 Blocking: 5% w/v nonfat dry milk, 1×TBST, at RT with gentle shaking
 Primary antibody: 1:1000 in blocking buffer, 4°C, overnight
 Secondary antibody (WLA023a) : 1:5000-1:10000, 45min
 Detection: ECL, 30s-2min



Western blot-Anti-PIN1 pAb

Lane 1: Mouse heart tissue lysate 30µg
 Lane 2: Mouse brain tissue lysate 30µg
 Lane 3: Rat lung tissue lysate 30µg
 Separation gel: 15% polyacrylamide
 Electrophoresis: 100V, 4°C, 3h
 Transmembrane: 100V, 4°C, 1h
 Blocking: 5% w/v nonfat dry milk, 1×TBST, at RT with gentle shaking
 Primary antibody: 1:1000 in blocking buffer, 4°C, overnight
 Secondary antibody (WLA023a) : 1:5000-1:10000, 45min
 Detection: ECL, 30s-2min