

## Anti-Ephrin A3 Rabbit pAb



WL01063

For Research Use Only. Not For Use In Diagnostic Procedures

## Product Information

<b>Product name</b>	Anti-Ephrin A3 Rabbit pAb	
<b>Source</b>	Rabbit	
<b>Species reactivity</b>	Human, Mouse, Rat	
<b>Tested applications</b>	WB	1:1000-1:2000
<b>Pack size</b>	50/100/200/500/1000µl	
<b>Storage</b>	Store at -20°C. <b>Avoid freeze/thaw cycles.</b>	
<b>Storage buffer</b>	Supplied in 20 mM phosphate (pH 7.5), 150 mM NaCl, 100 µg/ml BSA, 50% glycerol and less than 0.02% sodium azide	

## General Information

**Background** Ephrin A3 is a member of the ephrin (EPH) family. The ephrins and EPH-related receptors comprise the largest subfamily of receptor protein-tyrosine kinases and have been implicated in mediating developmental events, especially in the nervous system and in erythropoiesis. Based on their structures and sequence relationships, ephrins are divided into the ephrin-A (EFNA) class, which are anchored to the membrane by a glycosylphosphatidylinositol linkage, and the ephrin-B (EFNB) class, which are transmembrane proteins.

**Immunogen** Polyclonal antibody is produced by immunizing animals with a synthetic peptide of Ephrin A3.

**Purification** Polyclonal antibody was purified by Protein A affinity chromatography.

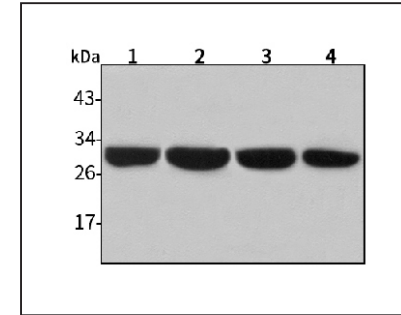
## Anti-Ephrin A3 Rabbit pAb



WL01063

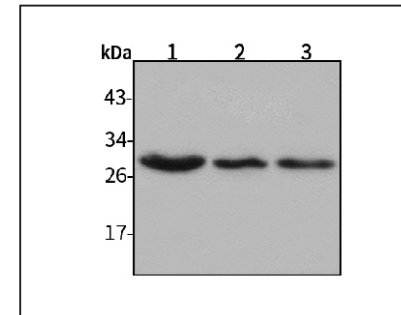
For Research Use Only. Not For Use In Diagnostic Procedures

## Product Images



## Western blot-Anti-Ephrin A3 pAb

Lane 1: Human HepG2 cell lysate  
 Lane 2: Human Hela cell lysate  
 Lane 3: Human BGC-823 cell lysate  
 Lane 4: Human MGC-803 cell lysate  
 All lanes: Anti-Ephrin A3 at 1:1000 dilution  
 Lysates/proteins at 20-50 µg per lane.  
 Predicted band size: 26 kDa  
 Observed band size: 32-38 kDa



## Western blot-Anti-Ephrin A3 pAb

Lane 1: Mouse kidney tissue lysate  
 Lane 2: Mouse liver tissue lysate  
 Lane 3: Rat brain tissue lysate  
 All lanes: Anti-Ephrin A3 at 1:1000 dilution  
 Lysates/proteins at 20-50 µg per lane.  
 Predicted band size: 26 kDa  
 Observed band size: 32-38 kDa