

Anti-IRS1 Rabbit pAb



WL03123

For Research Use Only. Not For Use In Diagnostic Procedures

Product Information

Product name	Anti-IRS1 Rabbit pAb	
Source	Rabbit	
Species reactivity	Human, Mouse, Rat	
Tested applications	WB	1:500-1:1000
Pack size	50/100/200/500/1000µl	
Storage	Store at -20°C. Avoid freeze/thaw cycles.	
Storage buffer	Supplied in 20 mM phosphate (pH 7.5), 150 mM NaCl, 100 µg/ml BSA, 50% glycerol and less than 0.02% sodium azide	

General Information

Background

The insulin receptor substrate-1 (IRS1) is an adaptor protein that is one of the major substrates of the insulin receptor kinase. IRS1 is phosphorylated on serine, threonine and tyrosine residues in a variety of tissues. IRS1 contains three putative binding sites for 14-3-3 (Ser 270, Ser 374 and Ser 641) and the motif around Ser 270 is located in the phosphotyrosine binding domain of IRS1, which is responsible for the interaction with the insulin receptor. The association of 14-3-3 with IRS1 increases significantly upon treatment with okadaic acid, a potent serine/ threonine phosphatase inhibitor. Therefore, the association of 14-3-3 protein may play a role in the regulation of insulin sensitivity by interrupting the association between the insulin receptor and IRS1.

Immunogen

Polyclonal antibody is produced by immunizing animals with a synthetic peptide of IRS1.

Purification

Polyclonal antibody was purified by immunogen affinity chromatography.

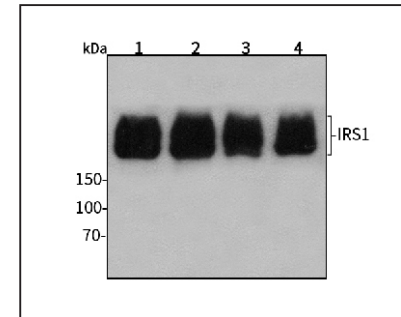
Anti-IRS1 Rabbit pAb



WL03123

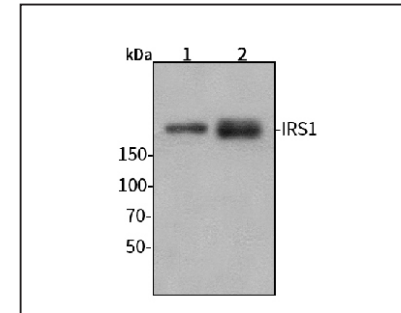
For Research Use Only. Not For Use In Diagnostic Procedures

Product Images



Western blot-Anti-IRS1 pAb

Lane 1: Human HepG2 cell lysate
 Lane 2: Human Hela cell lysate
 Lane 3: Human BGC-823 cell lysate
 Lane 4: Human MGC-803 cell lysate
 All lanes: Anti-IRS1 at 1:1000 dilution
 Lysates/proteins at 20-50 µg per lane.
 Predicted band size: 132 kDa
 Observed band size: 170-185 kDa



Western blot-Anti-IRS1 pAb

Lane 1: Mouse heart tissue lysate
 Lane 2: Mouse brain tissue lysate
 All lanes: Anti-IRS1 at 1:1000 dilution
 Lysates/proteins at 20-50 µg per lane.
 Predicted band size: 132 kDa
 Observed band size: 170-185 kDa