

Anti-GOLPH2 Rabbit pAb



WL05119

For Research Use Only. Not For Use In Diagnostic Procedures

Product Information

Product name	Anti-GOLPH2 Rabbit pAb		
Source	Rabbit		
Species reactivity	Human, Mouse, Rat		
Tested applications	WB	1:500-1:1000	
Pack size	50/100/200/500/1000µl		
Storage	Store at -20°C. Avoid freeze/thaw cycles.		
Storage buffer	Supplied in 20 mM phosphate (pH 7.5), 150 mM NaCl, 100 µg/ml BSA, 50% glycerol and less than 0.02% sodium azide		

General Information

Background

Golgi phosphoprotein 2 (GOLPH2, also known as GP73 or GOLM1) is a resident Golgi type-II membrane protein. It is predominantly expressed in the epithelial cells of many human tissues. GOLPH2 traffics through endosomes and can be secreted into the circulation. Its expression is upregulated in a number of tumors and GOLPH2 could be a promising serum marker for hepatocellular carcinoma.

Immunogen

Polyclonal antibody is produced by immunizing animals with a synthetic peptide of GOLPH2.

Purification

Polyclonal antibody was purified by immunogen affinity chromatography.

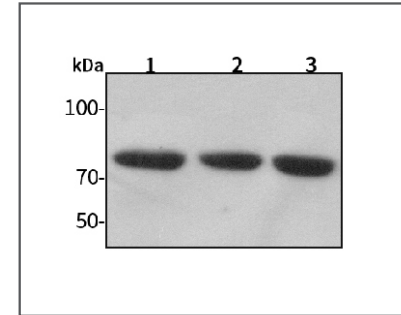
Anti-GOLPH2 Rabbit pAb



WL05119

For Research Use Only. Not For Use In Diagnostic Procedures

Product Images



Western blot-Anti-GOLPH2 pAb

Lane 1: Human HeLa cell lysate

Lane 2: Human MCF-7 cell lysate

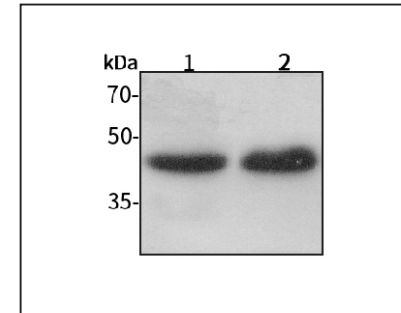
Lane 3: Human HEK-293 cell lysate

All lanes: Anti-GOLPH2 at 1:1000 dilution

Lysates/proteins at 20-50 µg per lane.

Predicted band size: 45 kDa

Observed band size: 45,75 kDa



Western blot-Anti-GOLPH2 pAb

Lane 1: Mouse liver tissue lysate

Lane 2: Rat colon tissue lysate

All lanes: Anti-GOLPH2 at 1:1000 dilution

Lysates/proteins at 20-50 µg per lane.

Predicted band size: 45 kDa

Observed band size: 45,75 kDa