

## Anti-SKP2 Rabbit pAb



WL02693

For Research Use Only. Not For Use In Diagnostic Procedures

## Product Information

<b>Product name</b>	Anti-SKP2 Rabbit pAb	
<b>Source</b>	Rabbit	
<b>Species reactivity</b>	Human, Mouse, Rat	
<b>Tested applications</b>	Western blot	1:500-1:1000
	<i>*Suggested working dilutions are given as a guide only. It is recommended that the user titrates the product for use in their own experiment using appropriate negative and positive controls.</i>	
<b>Molecular Wt.</b>	45 kDa	
<b>Pack size</b>	50/100/200/500/1000µl	
<b>Storage</b>	Store at -20°C. <b>Avoid freeze/thaw cycles.</b>	
<b>Storage buffer</b>	Supplied in 20 mM phosphate (pH 7.5), 150 mM NaCl, 100 µg/ml BSA, 50% glycerol and less than 0.02% sodium azide	

## General Information

**Background** Skp2 contains 424 residues in total with the approximate 40 amino acid F-box domain lying closer to the N-terminal region at the 94-140 position and the C-terminal region forming a concave surface consisting of ten leucine-rich repeats (LRRs). The F-box proteins constitute one of the four subunits of ubiquitin protein ligase complex called SCFs. In this SCF complex, Skp2 acts as the substrate recognition factor. Skp2 forms a stable complex with the cyclin A-CDK2 S-phase kinase. It specifically recognizes and promotes the degradation of phosphorylated cyclin-dependent kinase inhibitor 1B predominantly in S, G2 phase, and the initial part of the M phase. Overexpression of Skp2 results in increased CDK activity and contributes to the deregulated proliferation and genetic instabilities typical of cancer cells.

**Immunogen** Polyclonal antibody is produced by immunizing animals with a synthetic peptide of SKP2.

**Purification** Polyclonal antibody was purified by immunogen affinity chromatography.

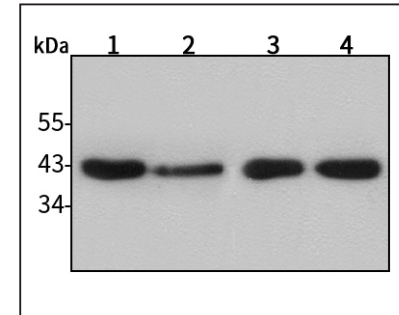
## Anti-SKP2 Rabbit pAb



WL02693

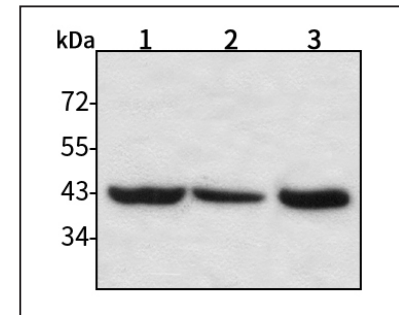
For Research Use Only. Not For Use In Diagnostic Procedures

## Product Images



Western blot-Anti-SKP2 pAb

Lane 1: Human HeLa cell lysate 30µg  
 Lane 2: Human MCF-7 cell lysate 30µg  
 Lane 3: Human HEK-293 cell lysate 30µg  
 Lane 4: Human THP-1 cell lysate 30µg  
 Separation gel: 10% polyacrylamide  
 Electrophoresis: 100V, 4°C, 3h  
 Transmembrane: 100V, 4°C, 1h  
 Blocking: 5% w/v nonfat dry milk, 1×TBST, at RT with gentle shaking  
 Primary antibody: 1:1000 in blocking buffer, 4°C, overnight  
 Secondary antibody (WLA023a) : 1:5000-1:10000, 45min  
 Detection: ECL, 30s-2min



Western blot-Anti-SKP2 pAb

Lane 1: Mouse stomach tissue lysate 30µg  
 Lane 2: Mouse colon tissue lysate 30µg  
 Lane 3: Rat lung tissue lysate 30µg  
 Separation gel: 10% polyacrylamide  
 Electrophoresis: 100V, 4°C, 3h  
 Transmembrane: 100V, 4°C, 1h  
 Blocking: 5% w/v nonfat dry milk, 1×TBST, at RT with gentle shaking  
 Primary antibody: 1:1000 in blocking buffer, 4°C, overnight  
 Secondary antibody (WLA023a) : 1:5000-1:10000, 45min  
 Visualization: ECL, 30s-2min