

Anti-GRK2 Rabbit pAb



WL03072

For Research Use Only. Not For Use In Diagnostic Procedures

Product Information

Product name	Anti-GRK2 Rabbit pAb		
Source	Rabbit		
Species reactivity	Human, Mouse, Rat		
Tested applications	WB	1:500-1:1000	
	IHC	1:100-1:400	
Cellular localization	Secreted and Cell membrane		
Pack size	50/100/200/500/1000µl		
Storage	Store at -20°C. Avoid freeze/thaw cycles.		
Storage buffer	Supplied in 20 mM phosphate (pH 7.5), 150 mM NaCl, 100 µg/ml BSA, 50% glycerol and less than 0.02% sodium azide		

General Information

Background G-protein-coupled receptor kinase 2 (GRK2), also known as beta-adrenergic receptor kinase 1 (beta-ARK1), is a member of the GRK family, which phosphorylates the activated form of G-protein-coupled receptors (GPCRs) and initiates the desensitization process of GPCR. It is an ubiquitous cytosolic enzyme that specifically phosphorylates the activated form of the beta-adrenergic and related G-protein-coupled receptors. PKC phosphorylation enhances GRK2 activity by promoting its membrane localization and by abolishing the inhibitory association of calmodulin.

Immunogen Polyclonal antibody is produced by immunizing animals with a synthetic peptide of GRK2.

Purification Polyclonal antibody was purified by immunogen affinity chromatography.

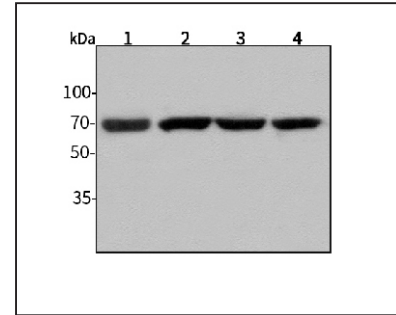
Anti-GRK2 Rabbit pAb



WL03072

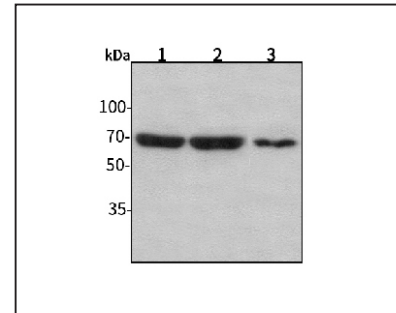
For Research Use Only. Not For Use In Diagnostic Procedures

Product Images



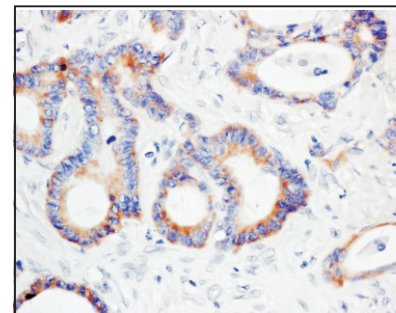
Western blot-Anti-GRK2 pAb

Lane 1: Human HepG2 cell lysate
 Lane 2: Human Hela cell lysate
 Lane 3: Human BGC-823 cell lysate
 Lane 4: Human MGC-803 cell lysate
 All lanes: Anti-GRK2 at 1:1000 dilution
 Lysates/proteins at 20-50 µg per lane.
 Predicted band size: 80 kDa
 Observed band size: 70 kDa



Western blot-Anti-GRK2 pAb

Lane 1: Mouse heart tissue lysate
 Lane 2: Mouse stomach tissue lysate
 Lane 3: Rat brain tissue lysate
 All lanes: Anti-GRK2 at 1:1000 dilution
 Lysates/proteins at 20-50 µg per lane.
 Predicted band size: 80 kDa
 Observed band size: 70 kDa



Immunohistochemistry-Anti-GRK2 pAb

Immunohistochemical analysis of paraffin-embedded human colon cancer using anti-GRK2 Rabbit Antibody at 1:200 dilution. Perform heat mediated antigen retrieval with Tris-EDTA buffer pH 9.0

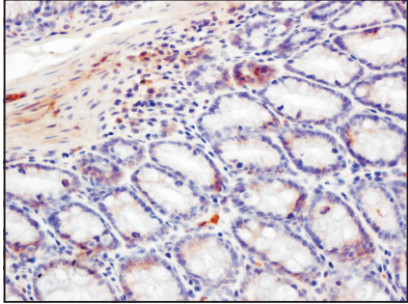
Anti-GRK2 Rabbit pAb



WL03072

For Research Use Only. Not For Use In Diagnostic Procedures

Product Images



Immunohistochemistry-Anti-GRK2 pAb

Immunohistochemical analysis of paraffin-embedded rat colon using anti-GRK2 Rabbit Antibody at 1:200 dilution.

Perform heat mediated antigen retrieval with Tris-EDTA buffer pH 9.0