

Anti-CD68 Rabbit pAb



WL04839

For Research Use Only. Not For Use In Diagnostic Procedures

Product Information

Product name	Anti-CD68 Rabbit pAb	
Source	Rabbit	
Species reactivity	Human, Mouse, Rat	
Tested applications	WB	1:1000-1:2000
Pack size	50/100/200/500/1000µl	
Storage	Store at -20°C. Avoid freeze/thaw cycles.	
Storage buffer	Supplied in 20 mM phosphate (pH 7.5), 150 mM NaCl, 100 µg/ml BSA, 50% glycerol and less than 0.02% sodium azide	

General Information

Background

Cd68, which is homologous to the mouse antigen macrophage, belongs to a family of acidic, highly glycosylated lysosomal glycoproteins (LGPs) that includes lamp-1 and lamp-2. It is highly expressed by human monocytes and tissue macrophages. It is a type I integral membrane protein with a heavily glycosylated extracellular domain and binds to tissue- and organ-specific lectins or selectins. CD68 is found in cytoplasmic granules and in the cytoplasm of various non-hematopoietic tissues including liver and kidney tubules and glomeruli. CD68 is also found, to a lesser extent, on the surface of macrophages, monocytes, neutrophils, basophils and large lymphocytes.

Immunogen

Polyclonal antibody is produced by immunizing animals with a synthetic peptide of CD68.

Purification

Polyclonal antibody was purified by Protein A affinity chromatography.

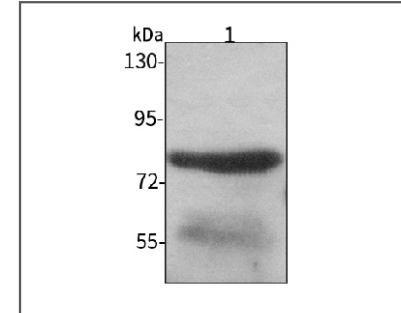
Anti-CD68 Rabbit pAb



WL04839

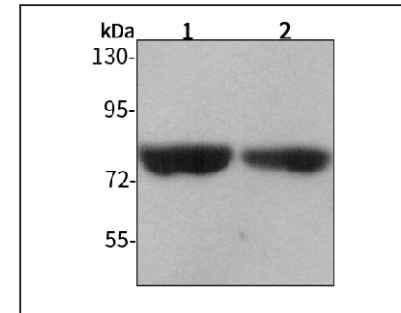
For Research Use Only. Not For Use In Diagnostic Procedures

Product Images



Western blot-Anti-CD68 pAb

Lane 1: Human SW480 cell lysate
 All lanes: Anti-CD68 at 1:1000 dilution
 Lysates/proteins at 20-50 µg per lane.
 Predicted band size: 37 kDa
 Observed band size: 75-110 kDa



Western blot-Anti-CD68 pAb

Lane 1: Mouse heart tissue lysate
 Lane 2: Rat lung tissue lysate
 All lanes: Anti-CD68 at 1:1000 dilution
 Lysates/proteins at 20-50 µg per lane.
 Predicted band size: 37 kDa
 Observed band size: 75-110 kDa