

## Anti-MMP2 Rabbit pAb



WL03224

For Research Use Only. Not For Use In Diagnostic Procedures

## Product Information

<b>Product name</b>	Anti-MMP2 Rabbit pAb		
<b>Source</b>	Rabbit		
<b>Species reactivity</b>	Human, Mouse, Rat		
<b>Tested applications</b>	WB	1:1000-1:2000	
	IHC	1:100-1:400	
<b>Cellular localization</b>	Secreted and Cell membrane		
<b>Pack size</b>	50/100/200/500/1000µl		
<b>Storage</b>	Store at -20°C. <b>Avoid freeze/thaw cycles.</b>		
<b>Storage buffer</b>	Supplied in 20 mM phosphate (pH 7.5), 150 mM NaCl, 100 µg/ml BSA, 50% glycerol and less than 0.02% sodium azide		

## Background

Proteins of the matrix metalloproteinase (MMP) family are involved in the breakdown of extracellular matrix in normal physiological processes, such as embryonic development, reproduction, and tissue remodeling, as well as in disease processes, such as arthritis and metastasis. Most MMP's are secreted as inactive proproteins which are activated when cleaved by extracellular proteinases. This gene encodes an enzyme which degrades type IV collagen, the major structural component of basement membranes. The enzyme plays a role in endometrial menstrual breakdown, regulation of vascularization and the inflammatory response. Mutations in this gene have been associated with Winchester syndrome and Nodulosis-Arthropathy-Osteolysis (NAO) syndrome.

## Immunogen

Polyclonal antibody is produced by immunizing animals with recombinant protein of MMP2.

## Purification

Polyclonal antibody was purified by protein A affinity chromatography.

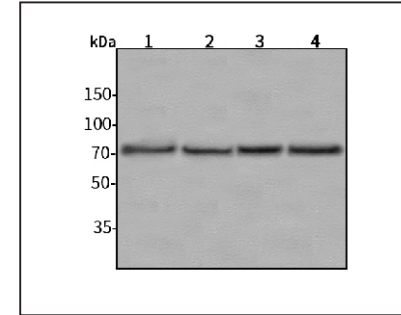
## Anti-MMP2 Rabbit pAb



WL03224

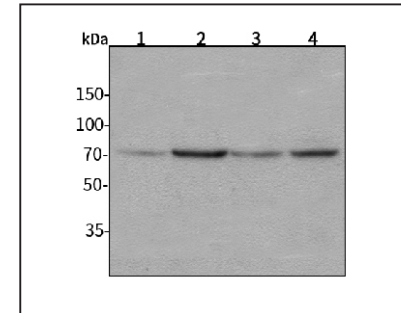
For Research Use Only. Not For Use In Diagnostic Procedures

## Product Images



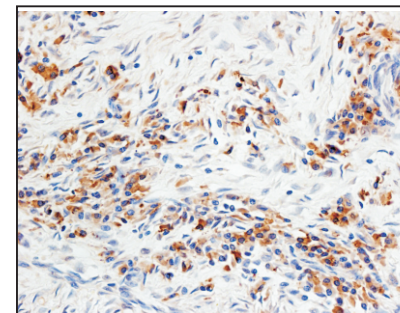
## Western blot-Anti-MMP2 pAb

**Lane 1:** Human HepG2 cell lysate  
**Lane 2:** Human Hela cell lysate  
**Lane 3:** Human BGC-823 cell lysate  
**Lane 4:** Human MGC-803 cell lysate  
**All lanes:** Anti-MMP2 at 1:1000 dilution  
 Lysates/proteins at 20-50 µg per lane.  
 Predicted band size: 72 kDa  
 Observed band size: 62-72 kDa



## Western blot-Anti-MMP2 pAb

**Lane 1:** Mouse kidney tissue lysate  
**Lane 2:** Mouse heart tissue lysate  
**Lane 3:** Rat liver tissue lysate  
**Lane 4:** Rat brain tissue lysate  
**All lanes:** Anti-MMP2 at 1:1000 dilution  
 Lysates/proteins at 20-50 µg per lane.  
 Predicted band size: 72 kDa  
 Observed band size: 62-72 kDa



## Immunohistochemistry-Anti-MMP2 pAb

Immunohistochemical analysis of paraffin-embedded human colon cancer using anti-MMP2 Rabbit Antibody at 1:150 dilution. Perform heat mediated antigen retrieval with Tris-EDTA buffer pH 9.0