

## Anti-PKC beta 1 Rabbit pAb



WL03143

For Research Use Only. Not For Use In Diagnostic Procedures

## Product Information

<b>Product name</b>	Anti-PKC beta 1 Rabbit pAb	
<b>Source</b>	Rabbit	
<b>Species reactivity</b>	Human, Mouse, Rat	
<b>Tested applications</b>	Western blot	1:500-1:1000

*\*Suggested working dilutions are given as a guide only. It is recommended that the user titrates the product for use in their own experiment using appropriate negative and positive controls.*

<b>Molecular Wt.</b>	76 kDa
<b>Pack size</b>	50/100/200/500/1000 $\mu$ l
<b>Storage</b>	Store at -20°C. <b>Avoid freeze/thaw cycles.</b>
<b>Storage buffer</b>	Supplied in 20 mM phosphate (pH 7.5), 150 mM NaCl, 100 $\mu$ g/ml BSA, 50% glycerol and less than 0.02% sodium azide

## General Information

**Background** Protein kinase C (PKC) is a family of serine- and threonine-specific protein kinases that can be activated by calcium and second messenger diacylglycerol. PKC beta 1 is one of the PKC family members. This protein kinase has been reported to be involved in many different cellular functions, such as B cell activation, apoptosis induction, endothelial cell proliferation, and intestinal sugar absorption. Studies in mice also suggest that this kinase may also regulate neuronal functions and correlate fear-induced conflict behavior after stress. Alternatively spliced transcript variants encoding distinct isoforms have been reported.

**Immunogen** Polyclonal antibody is produced by immunizing animals with a synthetic peptide of PKC beta 1.

**Purification** Polyclonal antibody was purified by immunogen affinity chromatography.

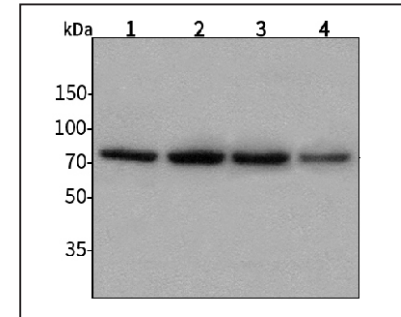
## Anti-PKC beta 1 Rabbit pAb



WL03143

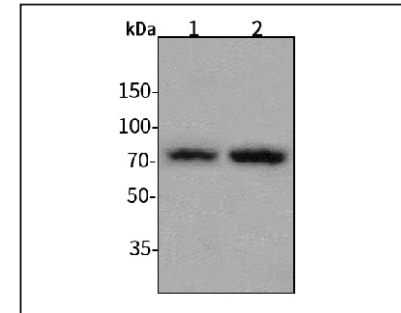
For Research Use Only. Not For Use In Diagnostic Procedures

## Product Images



Western blot-Anti-PKC beta 1 pAb

Lane 1: Human HepG2 cell lysate 30 $\mu$ g  
 Lane 2: Human Hela cell lysate 30 $\mu$ g  
 Lane 3: Human BGC-823 cell lysate 30 $\mu$ g  
 Lane 4: Human MGC-803 cell lysate 30 $\mu$ g  
 Separation gel: 8% polyacrylamide  
 Electrophoresis: 100V, 4°C, 3h  
 Transmembrane: 100V, 4°C, 1h  
 Blocking: 5% w/v nonfat dry milk, 1 $\times$  TBST, at RT with gentle shaking  
 Primary antibody: 1:500 in blocking buffer, 4°C, overnight  
 Secondary antibody (WLA023a) : 1:5000-1:10000, 45min  
 Detection: ECL, 30s-2min



Western blot-Anti-PKC beta 1 pAb

Lane 1: Mouse heart tissue lysate 30 $\mu$ g  
 Lane 2: Mouse liver tissue lysate 30 $\mu$ g  
 Separation gel: 8% polyacrylamide  
 Electrophoresis: 100V, 4°C, 3h  
 Transmembrane: 100V, 4°C, 1h  
 Blocking: 5% w/v nonfat dry milk, 1 $\times$  TBST, at RT with gentle shaking  
 Primary antibody: 1:500 in blocking buffer, 4°C, overnight  
 Secondary antibody (WLA023a) : 1:5000-1:10000, 45min  
 Detection: ECL, 30s-2min