

## Anti-P2X2 Rabbit pAb



WL05182

For Research Use Only. Not For Use In Diagnostic Procedures

## Product Information

<b>Product name</b>	Anti-P2X2 Rabbit pAb		
<b>Source</b>	Rabbit		
<b>Species reactivity</b>	Human, Mouse, Rat		
<b>Tested applications</b>	Western blot	1:500-1:1000	
	<i>*Suggested working dilutions are given as a guide only. It is recommended that the user titrates the product for use in their own experiment using appropriate negative and positive controls.</i>		
<b>Molecular Wt.</b>	52 kDa		
	50/100/200/500/1000µl		
<b>Pack size</b>	Store at -20°C. <b>Avoid freeze/thaw cycles.</b>		
<b>Storage</b>	Supplied in 20 mM phosphate (pH 7.5), 150 mM NaCl, 100 µg/ml BSA, 50% glycerol and less than 0.02% sodium azide		
<b>Storage buffer</b>			

## General Information

**Background** P2X2 this gene belongs to the family of purinoceptors for ATP. This receptor functions as a ligand-gated ion channel. Binding to ATP mediates synaptic transmission between neurons and from neurons to smooth muscle. Multiple transcript variants encoding distinct isoforms have been identified for this gene

**Immunogen** Polyclonal antibody is produced by immunizing animals with a synthetic peptide of P2X2.

**Purification** Polyclonal antibody was purified by immunogen affinity chromatography.

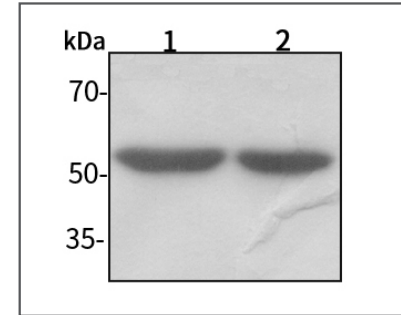
## Anti-P2X2 Rabbit pAb



WL05182

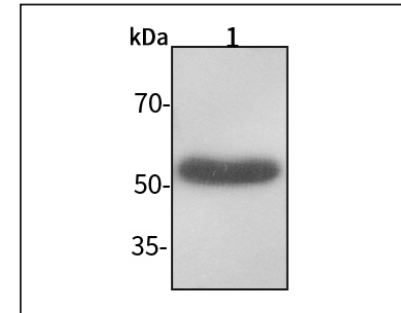
For Research Use Only. Not For Use In Diagnostic Procedures

## Product Images



## Western blot-Anti-P2X2 pAb

Lane 1: Human HeLa cell lysate 20µg  
 Lane 2: Human MCF-7 cell lysate 20µg  
 Separation gel: 10% polyacrylamide  
 Electrophoresis: 100V, 4°C, 3h  
 Transmembrane: 100V, 4°C, 1h  
 Blocking: 5% w/v nonfat dry milk, 1×TBST, at RT with gentle shaking  
 Primary antibody: 1:1000 in blocking buffer, 4°C, overnight  
 Secondary antibody (WLA023a) : 1:5000-1:10000, 45min  
 Detection: ECL, 30s-2min



## Western blot-Anti-P2X2 pAb

Lane 1: Rat lung tissue lysate 10µg  
 Separation gel: 10% polyacrylamide  
 Electrophoresis: 100V, 4°C, 3h  
 Transmembrane: 100V, 4°C, 1h  
 Blocking: 5% w/v nonfat dry milk, 1×TBST, at RT with gentle shaking  
 Primary antibody: 1:1000 in blocking buffer, 4°C, overnight  
 Secondary antibody (WLA023a) : 1:5000-1:10000, 45min  
 Detection: ECL, 30s-2min