

Anti-p27 Rabbit pAb



WL04174

For Research Use Only. Not For Use In Diagnostic Procedures

Product Information

Product name	Anti-p27 Rabbit pAb	
Source	Rabbit	
Species reactivity	Human, Mouse, Rat	
Tested applications	Western blot	1:1000-1:2000

**Suggested working dilutions are given as a guide only. It is recommended that the user titrates the product for use in their own experiment using appropriate negative and positive controls.*

Molecular Wt.	27 kDa
Pack size	50/100/200/500/1000µl
Storage	Store at -20°C. Avoid freeze/thaw cycles.
Storage buffer	Supplied in 20 mM phosphate (pH 7.5), 150 mM NaCl, 100 µg/ml BSA, 50% glycerol and less than 0.02% sodium azide

General Information

Background Cell cycle progression is regulated by a series of cyclin-dependent kinases consisting of catalytic subunits, designated Cdks, as well as activating subunits, designated cyclins. A series of proteins has recently been described that function as “mitotic inhibitors.” These include p21; p16; and a more recently described p16-related inhibitor designated p15. A p21-related protein, p27, are upregulated in quiescent cells and in cells treated with cAMP or other negative cell cycle regulators. Downregulation of p27 can be induced by treatment with interleukin-2 or other mitogens; this involves phosphorylation of p27 and its degradation by the ubiquitin-proteasome pathway.

Immunogen Polyclonal antibody is produced by immunizing animals with a synthetic peptide of p27.

Purification Polyclonal antibody was purified by Protein A affinity chromatography.

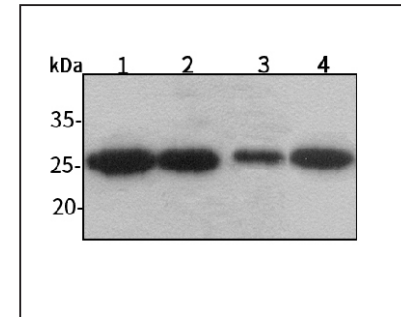
Anti-p27 Rabbit pAb



WL04174

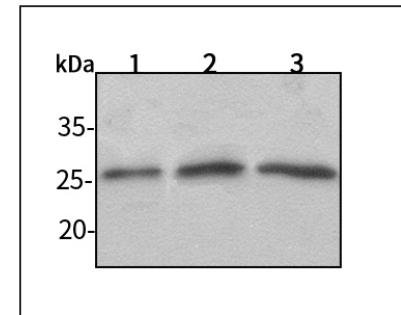
For Research Use Only. Not For Use In Diagnostic Procedures

Product Images



Western blot-Anti-p27 pAb

Lane 1: Human HeLa cell lysate 30µg
 Lane 2: Human MCF-7 cell lysate 30µg
 Lane 3: Human HEK293 cell lysate 30µg
 Lane 4: Human A549 cell lysate 30µg
 Separation gel: 13% polyacrylamide
 Electrophoresis: 100V, 4°C, 3h
 Transmembrane: 100V, 4°C, 1h
 Blocking: 5% w/v nonfat dry milk, 1×TBST, at RT with gentle shaking
 Primary antibody: 1:1000 in blocking buffer, 4°C, overnight
 Visualization: ECL, 30s-2min



Western blot-Anti-p27 pAb

Lane 1: Mouse liver tissue lysate 30µg
 Lane 2: Mouse lung tissue lysate 30µg
 Lane 3: Rat stomach tissue lysate 30µg
 Separation gel: 13% polyacrylamide
 Electrophoresis: 100V, 4°C, 3h
 Transmembrane: 100V, 4°C, 1h
 Blocking: 5% w/v nonfat dry milk, 1×TBST, at RT with gentle shaking
 Primary antibody: 1:1000 in blocking buffer, 4°C, overnight
 Visualization: ECL, 30s-2min