

## Anti-Twist1 Rabbit pAb



WL00997

For Research Use Only. Not For Use In Diagnostic Procedures

## Product Information

<b>Product name</b>	Anti-Twist1 Rabbit pAb	
<b>Source</b>	Rabbit	
<b>Species reactivity</b>	Human, Mouse, Rat	
<b>Tested applications</b>	WB	1:500
	IF	1:500
<b>Cellular localization</b>	Secreted and Cell membrane	
<b>Pack size</b>	50/100/200/500/1000µl	
<b>Storage</b>	Store at -20°C. <b>Avoid freeze/thaw cycles.</b>	
<b>Storage buffer</b>	Supplied in 20 mM phosphate (pH 7.5), 150 mM NaCl, 100 µg/ml BSA, 50% glycerol and less than 0.02% sodium azide	

## General Information

<b>Background</b>	Twist is a basic helix-loop-helix (b-HLH) transcription factor that functions as a master regulator of embryonic morphogenesis and plays essential roles in mesenchymal differentiation and osteogenic determination. Mutations affecting the b-HLH domain of the Twist gene have been associated with Saethre-Chotzen syndrome, an autosomal dominant craniosynostosis disorder causing craniofacial and limb abnormalities. Twist is expressed throughout the epithelial somite but not in the myotome. Twist requires dimerization with the E proteins and inhibits myogenic regulatory factors. It has been implicated as regulator of the temporal and spatial formation of myotomes.
<b>Immunogen</b>	Polyclonal antibody is produced by immunizing animals with a synthetic peptide of Twist1.
<b>Purification</b>	Polyclonal antibody was purified by Protein A affinity chromatography.

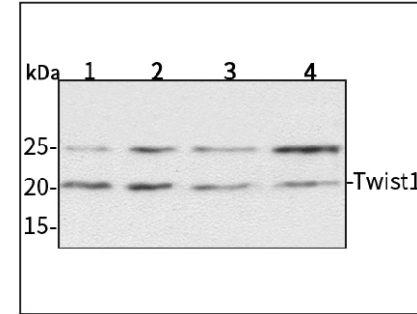
## Anti-Twist1 Rabbit pAb



WL00997

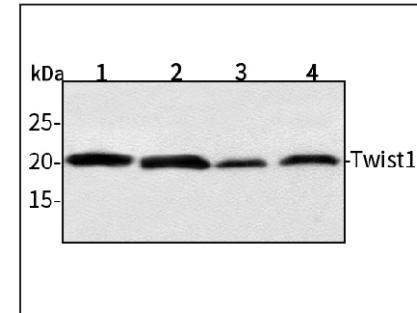
For Research Use Only. Not For Use In Diagnostic Procedures

## Product Images



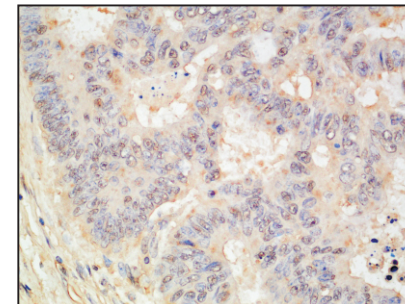
## Western blot-Anti-Twist1 pAb

Lane 1: Human MGC-803 cell lysate  
 Lane 2: Human SGC-7901 cell lysate  
 Lane 3: Human MCF-7 cell lysate  
 Lane 4: Human HEK-293 cell lysate  
 All lanes: Anti-Twist1 at 1:500 dilution  
 Lysates/proteins at 20-50 µg per lane.  
 Predicted band size: 21 kDa  
 Observed band size: 26 kDa



## Western blot-Anti-Twist1 pAb

Lane 1: Mouse kidney tissue lysate  
 Lane 2: Mouse heart tissue lysate  
 Lane 3: Rat liver tissue lysate  
 Lane 4: Rat brain tissue lysate  
 All lanes: Anti-Twist1 at 1:500 dilution  
 Lysates/proteins at 20-50 µg per lane.  
 Predicted band size: 21 kDa  
 Observed band size: 26 kDa



## Immunohistochemistry-Anti-Twist1 pAb

Immunohistochemical analysis of paraffin-embedded human rectum cancer using anti-Twist1 Rabbit Antibody at 1:500 dilution. Perform heat mediated antigen retrieval with Tris-EDTA buffer pH 9.0

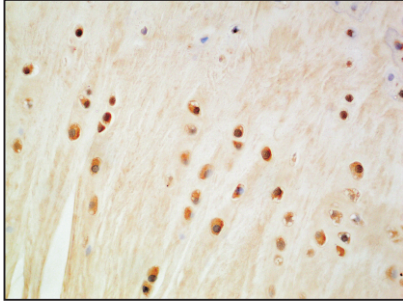
## Anti-Twist1 Rabbit pAb



WL00997

For Research Use Only. Not For Use In Diagnostic Procedures

### Product Information



#### Immunohistochemistry-Anti-Twist1 pAb

Immunohistochemical analysis of paraffin-embedded rat femur using anti-Twist1 Rabbit Antibody at 1:500 dilution.

Perform heat mediated antigen retrieval with Tris-EDTA buffer pH 9.0