

Anti-SOS1 Rabbit pAb



WL05528

For Research Use Only. Not For Use In Diagnostic Procedures

Product Information

Product name	Anti-SOS1 Rabbit pAb		
Source	Rabbit		
Species reactivity	Human		
Tested applications	WB	1:500-1:1000	
Pack size	50/100/200/500/1000µl		
Storage	Store at -20°C. Avoid freeze/thaw cycles.		
Storage buffer	Supplied in 20 mM phosphate (pH 7.5), 150 mM NaCl, 100 µg/ml BSA, 50% glycerol and less than 0.02% sodium azide		

General Information

Background SOS1 promotes the exchange of Ras-bound GDP by GTP. EPS8, E3B1 and SOS1 form a tricomplex in vivo that exhibits RAC-specific guanine nucleotide exchange factor activity in vitro. Defects in SOS1 are the cause of gingival fibromatosis 1 (GGF1).

Immunogen Polyclonal antibody is produced by immunizing animals with a synthetic peptide of SOS1.

Purification Polyclonal antibody was purified by immunogen affinity chromatography.

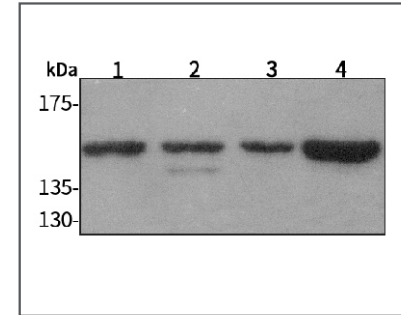
Anti-SOS1 Rabbit pAb



WL05528

For Research Use Only. Not For Use In Diagnostic Procedures

Product Images



Western blot-Anti-SOS1 pAb

Lane 1: Human HeLa cell lysate
 Lane 2: Human HEK-293 cell lysate
 Lane 3: Human HCT116 cell lysate
 Lane 4: Human MDA-MB-231 cell lysate
 All lanes: Anti-SOS1 at 1:1000 dilution
 Lysates/proteins at 20-50 µg per lane.
 Predicted band size: 152 kDa
 Observed band size: 152 kDa