

## Anti-KISS1 Rabbit pAb



WL02651

For Research Use Only. Not For Use In Diagnostic Procedures

## Product Information

<b>Product name</b>	Anti-KISS1 Rabbit pAb		
<b>Source</b>	Rabbit		
<b>Species reactivity</b>	Human, Mouse, Rat		
<b>Tested applications</b>	WB	1:1500-1:2000	
	IHC	1:500	
	IF	1:500	
<b>Cellular localization</b>	Secreted and Cell membrane		
<b>Pack size</b>	50/100/200/500/1000µl		
<b>Storage</b>	Store at -20°C. <b>Avoid freeze/thaw cycles.</b>		
<b>Storage buffer</b>	Supplied in 20 mM phosphate (pH 7.5), 150 mM NaCl, 100 µg/ml BSA, 50% glycerol and less than 0.02% sodium azide		

## General Information

**Background** Kisspeptin (formerly known as metastin) is a protein that is encoded by the KISS1 gene in humans. Kisspeptin is a G-protein coupled receptor ligand for GPR54. Transcripts for human KiSS-1 are predominantly expressed in the brain and placenta. KiSS-1 protein contains a polyproline-rich domain (SH3 ligand) and a putative protein kinase C-α phosphorylation site. KiSS-1 may regulate events downstream of cell-matrix adhesion in mechanisms involving cytoskeletal reorganization. Kisspeptin can stimulate secretion of aldosterone and the release of insulin.

**Immunogen** Polyclonal antibody is produced by immunizing animals with a synthetic peptide of KISS1.

**Purification** Polyclonal antibody was purified by Protein A affinity chromatography.

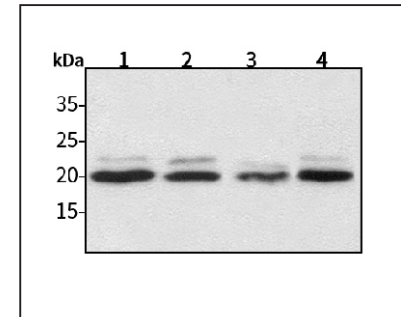
## Anti-KISS1 Rabbit pAb



WL02651

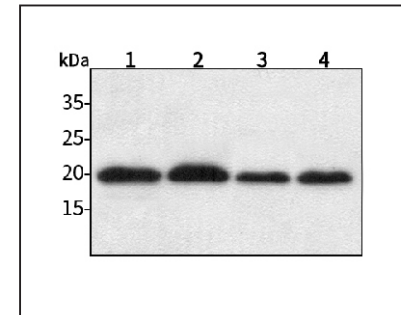
For Research Use Only. Not For Use In Diagnostic Procedures

## Product Images



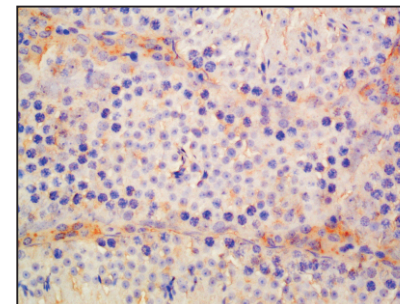
## Western blot-Anti-KISS1 pAb

Lane 1: Human HepG2 cell lysate  
 Lane 2: Human Hela cell lysate  
 Lane 3: Human BGC-823 cell lysate  
 Lane 4: Human MGC-803 cell lysate  
 All lanes: Anti-KISS1 at 1:1500 dilution  
 Lysates/proteins at 20-50 µg per lane.  
 Predicted band size: 15 kDa  
 Observed band size: 20 kDa



## Western blot-Anti-KISS1 pAb

Lane 1: Mouse kidney tissue lysate  
 Lane 2: Mouse heart tissue lysate  
 Lane 3: Rat brain tissue lysate  
 Lane 4: Rat liver tissue lysate  
 All lanes: Anti-KISS1 at 1:1500 dilution  
 Lysates/proteins at 20-50 µg per lane.  
 Predicted band size: 15 kDa  
 Observed band size: 20 kDa



## Immunohistochemistry-Anti-KISS1 pAb

Immunohistochemical analysis of paraffin-embedded mouse testicle using anti-KISS1 Rabbit Antibody at 1:500 dilution. Perform heat mediated antigen retrieval with Tris-EDTA buffer pH 9.0

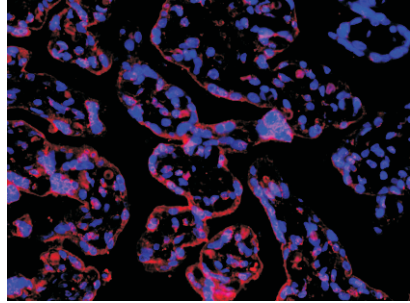
## Anti-KISS1 Rabbit pAb



WL02651

For Research Use Only. Not For Use In Diagnostic Procedures

### Product Information



#### Immunofluorescence-Anti-KISS1 pAb

Immunofluorescence analysis of paraffin-embedded human eclampsia placenta using anti-KISS1 Rabbit Antibody at 1:500 dilution.

Perform heat mediated antigen retrieval with Tris-EDTA buffer pH 9.0