

Anti-Wnt1 Rabbit pAb



WL05209

For Research Use Only. Not For Use In Diagnostic Procedures

Product Information

Product name	Anti-Wnt1 Rabbit pAb		
Source	Rabbit		
Species reactivity	Mouse, Rat		
Tested applications	Western blot	1:1000-1:2000	
	<i>*Suggested working dilutions are given as a guide only. It is recommended that the user titrates the product for use in their own experiment using appropriate negative and positive controls.</i>		
Molecular Wt.	41 kDa		
Pack size	50/100/200/500/1000µl		
Storage	Store at -20°C. Avoid freeze/thaw cycles.		
Storage buffer	Supplied in 20 mM phosphate (pH 7.5), 150 mM NaCl, 100 µg/ml BSA, 50% glycerol and less than 0.02% sodium azide		

General Information

Background	Wnt-induced secreted protein (WISP)-1, WISP-2 and WISP-3 are members of the CCN family of growth factors, which include connective tissue growth factor (CTGF) and Cyr61. Both WISP-1 and WISP-2 are upregulated in cells transformed with the protooncogene Wnt-1, and they are also more highly expressed in human colon tumors, suggesting that these proteins may participate in tumor development. WISP-3 is involved in normal postnatal skeletal growth, and it is also implicated in the development of the autosomal recessive skeletal disorder progressive pseudorheumatoid dysplasia, which affects cartilage homeostasis by disrupting the growth of chondrocyte and normal cell columnar organization.
Immunogen	Polyclonal antibody is produced by immunizing animals with a synthetic peptide of Wnt1.
Purification	Polyclonal antibody was purified by Protein A affinity chromatography.

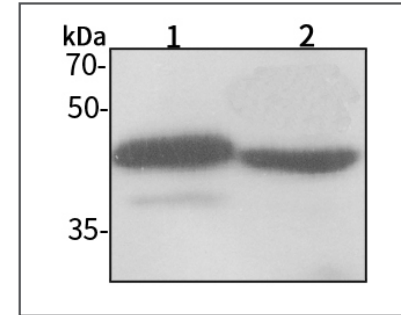
Anti-Wnt1 Rabbit pAb



WL05209

For Research Use Only. Not For Use In Diagnostic Procedures

Product Images



Western blot-Anti-Wnt1 pAb

Lane 1: Mouse colon tissue lysate 10µg

Lane 2: Rat stomach tissue lysate 10µg

Separation gel: 11% polyacrylamide

Electrophoresis: 100V, 4°C, 3h

Transmembrane: 100V, 4°C, 1h

Blocking: 5% w/v nonfat dry milk, 1×TBST, at RT with gentle shaking

Primary antibody: 1:1000 in blocking buffer, 4°C, overnight

Secondary antibody (WLA023a) : 1:5000-1:10000, 45min

Detection: ECL, 30s-2min