

Anti-CD163 Rabbit pAb



WL03026

For Research Use Only. Not For Use In Diagnostic Procedures

Product Information

Product name	Anti-CD163 Rabbit pAb	
Source	Rabbit	
Species reactivity	Human, Mouse, Rat	
Tested applications	WB	1:1000-1:2000
	IHC	1:500
	IF	1:500

Cellular localization Secreted and Cell membrane

Pack size 50/100/200/500/1000µl

Storage Store at -20°C. **Avoid freeze/thaw cycles.**

Storage buffer Supplied in 20 mM phosphate (pH 7.5), 150 mM NaCl, 100 µg/ml BSA, 50% glycerol and less than 0.02% sodium azide

General Information

Background Cd163 is the high affinity scavenger receptor for the hemoglobin-haptoglobin complex and in the absence of haptoglobin - with lower affinity - for hemoglobin alone. It has also been shown to mark cells of monocyte/macrophage lineage. A soluble form of the receptor exists in plasma, commonly denoted sCD163. It is generated by ectodomain shedding of the membrane bound receptor. The existence of several CD163 isoforms, which differ in the structure of their cytoplasmic domains and putative phosphorylation sites, suggests that these isoforms also differ in their signaling mechanism.

Immunogen Polyclonal antibody is produced by immunizing animals with a synthetic peptide of CD163.

Purification Polyclonal antibody was purified by Protein A affinity chromatography.

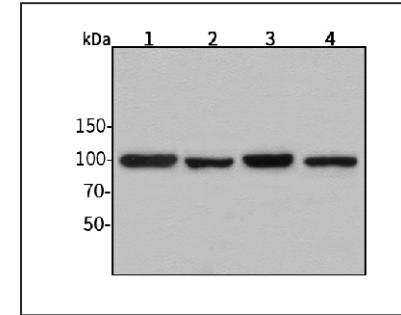
Anti-CD163 Rabbit pAb



WL03026

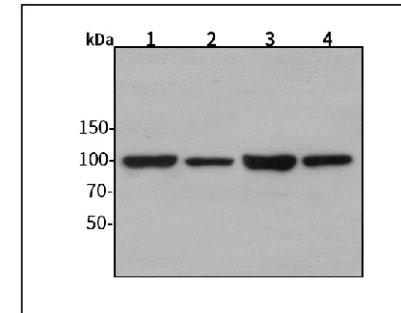
For Research Use Only. Not For Use In Diagnostic Procedures

Product Images



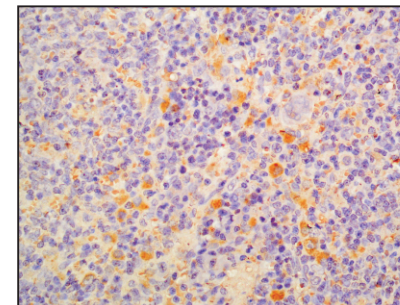
Western blot-Anti-CD163 pAb

Lane 1: Human HepG2 cell lysate
 Lane 2: Human Hela cell lysate
 Lane 3: Human BGC-823 cell lysate
 Lane 4: Human MGC-803 cell lysate
 All lanes: Anti-CD163 at 1:1000 dilution
 Lysates/proteins at 20-50 µg per lane.
 Predicted band size: 125 kDa
 Observed band size: 100 kDa



Western blot-Anti-CD163 pAb

Lane 1: Mouse kidney tissue lysate
 Lane 2: Mouse heart tissue lysate
 Lane 3: Rat spleen tissue lysate
 Lane 4: Rat stomach tissue lysate
 All lanes: Anti-CD163 at 1:1000 dilution
 Lysates/proteins at 20-50 µg per lane.
 Predicted band size: 125 kDa
 Observed band size: 100 kDa



Immunohistochemistry-Anti-CD163 pAb

Immunohistochemical analysis of paraffin-embedded rat spleen using anti-CD163 Rabbit Antibody at 1:500 dilution. Perform heat mediated antigen retrieval with Tris-EDTA buffer pH 9.0

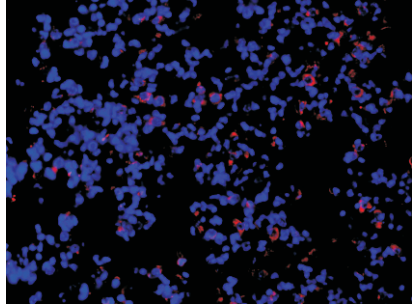
Anti-CD163 Rabbit pAb



WL03026

For Research Use Only. Not For Use In Diagnostic Procedures

Product Information



Immunofluorescence-Anti-CD163 pAb

Immunofluorescence analysis of paraffin-embedded mouse lung using anti-CD163 Rabbit Antibody at 1:500 dilution.

Perform heat mediated antigen retrieval with Tris-EDTA buffer pH 9.0