

## Anti-p22-phox Rabbit pAb



WL03514

For Research Use Only. Not For Use In Diagnostic Procedures

## Product Information

<b>Product name</b>	Anti-p22-phox Rabbit pAb	
<b>Source</b>	Rabbit	
<b>Species reactivity</b>	Mouse, Rat	
<b>Tested applications</b>	WB	1:1000-1:2000
<b>Pack size</b>	50/100/200/500/1000µl	
<b>Storage</b>	Store at -20°C. <b>Avoid freeze/thaw cycles.</b>	
<b>Storage buffer</b>	Supplied in 20 mM phosphate (pH 7.5), 150 mM NaCl, 100 µg/ml BSA, 50% glycerol and less than 0.02% sodium azide	

## General Information

<b>Background</b>	Cytochrome b (-245) is composed of cytochrome b alpha (CYBA) and beta (CYBB) chain. It has been proposed as a primary component of the microbicidal oxidase system of phagocytes. CYBB deficiency is one of five described biochemical defects associated with chronic granulomatous disease (CGD). In this disorder, there is decreased activity of phagocyte NADPH oxidase. The superoxide-generating NADPH oxidase is present in phagocytes, neuroepithelial bodies, vascular smooth muscle cells and endothelial cells. It includes a membrane-bound flavocytochrome containing two subunits, gp91-phox and p22-phox, and the cytosolic proteins p47-phox and p67-phox.
<b>Immunogen</b>	Polyclonal antibody is produced by immunizing animals with a synthetic peptide of p22-phox.
<b>Purification</b>	Polyclonal antibody was purified by Protein A chromatography.

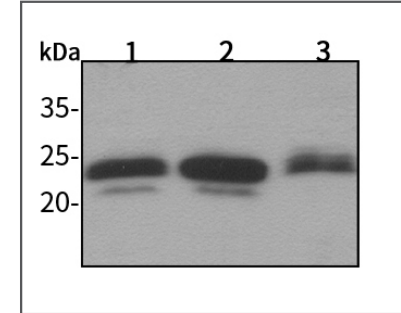
## Anti-p22-phox Rabbit pAb



WL03514

For Research Use Only. Not For Use In Diagnostic Procedures

## Product Images



## Western blot-Anti-p22-phox pAb

Lane 1: Mouse heart tissue lysate  
 Lane 2: Mouse live tissue lysate  
 Lane 3: Rat kidney tissue lysate  
 All lanes: Anti-p22-phox at 1:1000 dilution  
 Lysates/proteins at 20-50 µg per lane.  
 Predicted band size: 22 kDa  
 Observed band size: 22 kDa