

Anti-C/EBP β Rabbit pAb

WL03593

For Research Use Only. Not For Use In Diagnostic Procedures

Product Information

Product name	Anti-C/EBP β Rabbit pAb
Source	Rabbit
Species reactivity	Human, Mouse, Rat
Tested applications	WB 1:500-1:1000
Pack size	50/100/200/500/1000 μ l
Storage	Store at -20°C. Avoid freeze/thaw cycles.
Storage buffer	Supplied in 20 mM phosphate (pH 7.5), 150 mM NaCl, 100 μ g/ml BSA, 50% glycerol and less than 0.02% sodium azide

General Information

Background

The protein encoded by this intronless gene is a bZIP transcription factor which can bind as a homodimer to certain DNA regulatory regions. It can also form heterodimers with the related proteins CEBP-alpha, CEBP-delta, and CEBP-gamma. The encoded protein is important in the regulation of genes involved in immune and inflammatory responses and has been shown to bind to the IL-1 response element in the IL-6 gene, as well as to regulatory regions of several acute-phase and cytokine genes. In addition, the encoded protein can bind the promoter and upstream element and stimulate the expression of the collagen type I gene.

Immunogen

Polyclonal antibody is produced by immunizing animals with a synthetic peptide of C/EBP β .

Purification

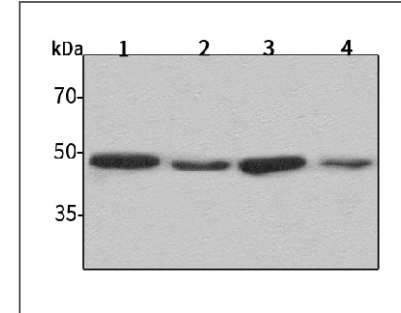
Polyclonal antibody was purified by immunogen affinity chromatography.

Anti-C/EBP β Rabbit pAb

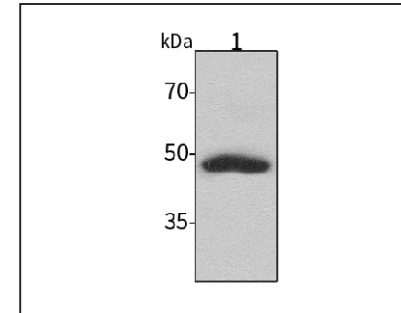
WL03593

For Research Use Only. Not For Use In Diagnostic Procedures

Product Images

Western blot-Anti-C/EBP β pAb

Lane 1: Human HeLa cell lysate
 Lane 2: Human MCF-7 cell lysate
 Lane 3: Human HEK-293 cell lysate
 Lane 4: Human HepG2 cell lysate
 All lanes: Anti-C/EBP β at 1:1000 dilution
 Lysates/proteins at 20-50 μ g per lane.
 Predicted band size: 36 kDa
 Observed band size: 45 kDa

Western blot-Anti-C/EBP β pAb

Lane 1: Mouse liver cell lysate
 All lanes: Anti-C/EBP β at 1:1000 dilution
 Lysates/proteins at 20-50 μ g per lane.
 Predicted band size: 36 kDa
 Observed band size: 45 kDa