

Anti-Wnt1 Rabbit pAb



WL05209

For Research Use Only. Not For Use In Diagnostic Procedures

Product Information

Product name	Anti-Wnt1 Rabbit pAb	
Source	Rabbit	
Species reactivity	Mouse, Rat	
Tested applications	WB	1:1000-1:2000
Pack size	50/100/200/500/1000µl	
Storage	Store at -20°C. Avoid freeze/thaw cycles.	
Storage buffer	Supplied in 20 mM phosphate (pH 7.5), 150 mM NaCl, 100 µg/ml BSA, 50% glycerol and less than 0.02% sodium azide	

General Information

Background

Wnt-induced secreted protein (WISP)-1, WISP-2 and WISP-3 are members of the CCN family of growth factors, which include connective tissue growth factor (CTGF) and Cyr61. Both WISP-1 and WISP-2 are upregulated in cells transformed with the protooncogene Wnt-1, and they are also more highly expressed in human colon tumors, suggesting that these proteins may participate in tumor development. WISP-3 is involved in normal postnatal skeletal growth, and it is also implicated in the development of the autosomal recessive skeletal disorder progressive pseudorheumatoid dysplasia, which affects cartilage homeostasis by disrupting the growth of chondrocyte and normal cell columnar organization.

Immunogen

Polyclonal antibody is produced by immunizing animals with a synthetic peptide of Wnt1.

Purification

Polyclonal antibody was purified by Protein A affinity chromatography.

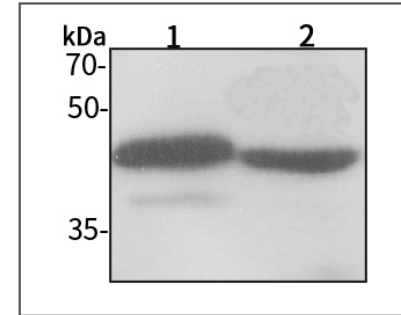
Anti-Wnt1 Rabbit pAb



WL05209

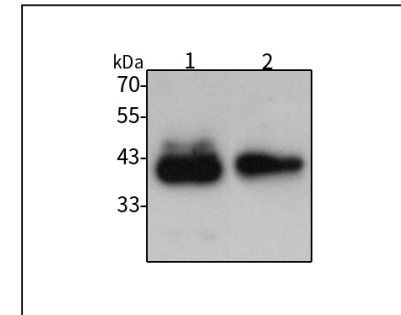
For Research Use Only. Not For Use In Diagnostic Procedures

Product Images



Western blot-Anti-Wnt1 pAb

Lane 1: Mouse colon tissue lysate
 Lane 2: Rat stomach tissue lysate
 All lanes: Anti-Wnt1 at 1:1000 dilution
 Lysates/proteins at 20-50 µg per lane.
 Predicted band size: 41 kDa
 Observed band size: 41 kDa



Western blot-Anti-Wnt1 pAb

Lane 1: Rat lung tissue lysate
 Lane 2: Rat stomach tissue lysate
 All lanes: Anti-Wnt1 at 1:1000 dilution
 Lysates/proteins at 20-50 µg per lane.
 Predicted band size: 41 kDa
 Observed band size: 41 kDa