

## Anti-Ubiquitin/Ub Rabbit pAb



WL01368

For Research Use Only. Not For Use In Diagnostic Procedures

## Product Information

<b>Product name</b>	Anti-Ubiquitin/Ub Rabbit pAb	
<b>Source</b>	Rabbit	
<b>Species reactivity</b>	Human, Mouse, Rat	
<b>Tested applications</b>	WB	1:1000-1:2000
	IHC	1:100

**Cellular localization** Secreted and Cell membrane

**Pack size** 50/100/200/500/1000µl

**Storage** Store at -20°C. **Avoid freeze/thaw cycles.**

**Storage buffer** Supplied in 20 mM phosphate (pH 7.5), 150 mM NaCl, 100 µg/ml BSA, 50% glycerol and less than 0.02% sodium azide

## General Information

**Background** Ubiquitin is a conserved polypeptide unit that plays an important role in the ubiquitin-proteasome pathway. The primary function of ubiquitin is to clear abnormal, foreign and improperly folded proteins by targeting them for degradation by the 26S proteasome. This small, 76 amino acid protein can be covalently attached to cellular proteins via an isopeptide linkage between the carboxy terminal group of ubiquitin and lysine amino groups on the acceptor protein. Several proteins such as IκB, p53, cdc25A, and Bcl-2 have been shown to be targets for the ubiquitin-proteasome process as part of regulation of cell cycle progression, differentiation, cell stress response, and apoptosis.

**Immunogen** Polyclonal antibody is produced by immunizing animals with a synthetic peptide of Ubiquitin/Ub.

**Purification** Polyclonal antibody was purified by Protein A affinity chromatography.

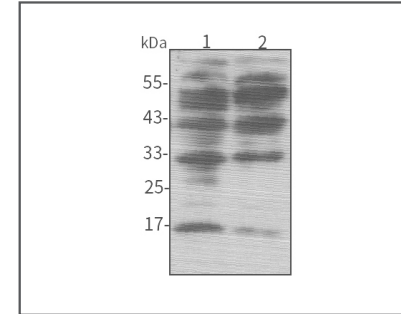
## Anti-Ubiquitin/Ub Rabbit pAb



WL01368

For Research Use Only. Not For Use In Diagnostic Procedures

## Product Images

**Western blot-Anti-Ubiquitin/Ub pAb**

Lane 1: Human HEK-293 cell lysate

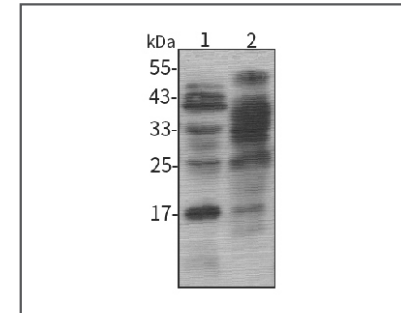
Lane 2: Human HCT116 cell lysate

All lanes: Anti-Ubiquitin/Ub at 1:1000 dilution

Lysates/proteins at 20-50 µg per lane.

Predicted band size: 8.5 kDa

Observed band size: 17 kDa

**Western blot-Anti-Ubiquitin/Ub pAb**

Lane 1: Mouse liver tissue lysate

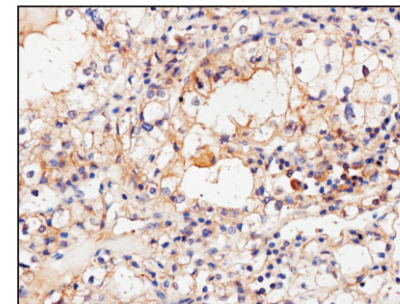
Lane 2: Rat lung tissue lysate

All lanes: Anti-Ubiquitin/Ub at 1:1000 dilution

Lysates/proteins at 20-50 µg per lane.

Predicted band size: 8.5 kDa

Observed band size: 17 kDa

**Immunohistochemistry-Anti-Ubiquitin/Ub pAb**

Immunohistochemical analysis of paraffin-embedded human kidney cancer using anti-Ubiquitin/Ub Rabbit Antibody at 1:100 dilution.

Perform heat mediated antigen retrieval with Tris-EDTA buffer pH 9.0

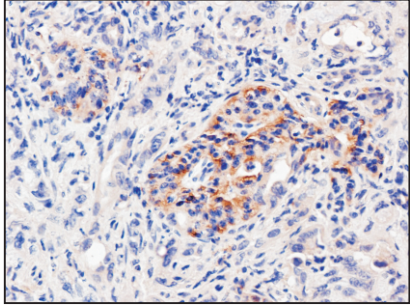
## Anti-Ubiquitin/Ub Rabbit pAb



WL01368

For Research Use Only. Not For Use In Diagnostic Procedures

### Product Information



#### Immunohistochemistry-Anti-Ubiquitin/Ub pAb

Immunohistochemical analysis of paraffin-embedded human pancreatic cancer using anti-Ubiquitin/Ub Rabbit Antibody at 1:100 dilution.

Perform heat mediated antigen retrieval with Tris-EDTA buffer pH 9.0