

## Anti-ELK4 Rabbit pAb



WL05157

For Research Use Only. Not For Use In Diagnostic Procedures

## Product Information

<b>Product name</b>	Anti-ELK4 Rabbit pAb		
<b>Source</b>	Rabbit		
<b>Species reactivity</b>	Human, Mouse, Rat		
<b>Tested applications</b>	WB	1:1000-1:2000	
<b>Pack size</b>	50/100/200/500/1000µl		
<b>Storage</b>	Store at -20°C. <b>Avoid freeze/thaw cycles.</b>		
<b>Storage buffer</b>	Supplied in 20 mM phosphate (pH 7.5), 150 mM NaCl, 100 µg/ml BSA, 50% glycerol and less than 0.02% sodium azide		

## General Information

## Background

ELK4, also named as SAP1, SAP-1 and SAP1, belongs to the ETS family. It forms a ternary complex with the serum response factor (SRF). ELK4 requires DNA-bound SRF for ternary complex formation and makes extensive DNA contacts to the 5' side of SRF, but does not bind DNA autonomously. It is androgen regulated, involved in promoting cell growth.

## Immunogen

Polyclonal antibody is produced by immunizing animals with a synthetic peptide of ELK4.

## Purification

Polyclonal antibody was purified by Protein A affinity chromatography.

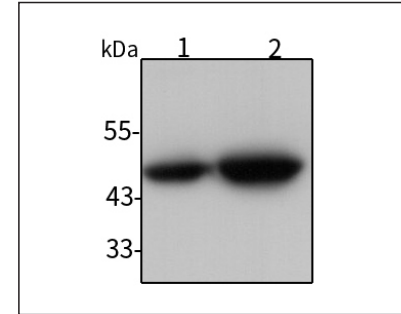
## Anti-ELK4 Rabbit pAb



WL05157

For Research Use Only. Not For Use In Diagnostic Procedures

## Product Images



## Western blot-Anti-ELK4 pAb

Lane 1: Human A549 cell lysate

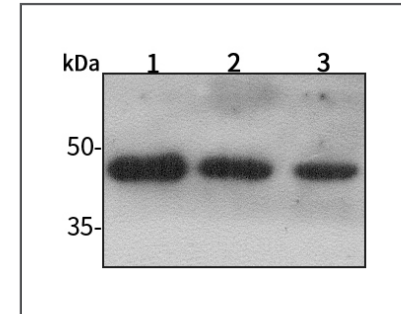
Lane 2: Human HUVEC cell lysate

All lanes: Anti-ELK4 at 1:1000 dilution

Lysates/proteins at 20-50 µg per lane.

Predicted band size: 47 kDa

Observed band size: 47 kDa



## Western blot-Anti-ELK4 pAb

Lane 1: Mouse heart tissue lysate

Lane 2: Rat heart tissue lysate

Lane 3: Rat liver tissue lysate

All lanes: Anti-ELK4 at 1:1000 dilution

Lysates/proteins at 20-50 µg per lane.

Predicted band size: 47 kDa

Observed band size: 47 kDa